



Mayo Clinic - Red Cedar, WI



We Can.
DESIGN. BUILD. DELIVER.
wibenchmfg.com

Healthcare

We Can.

DESIGN. BUILD. DELIVER.

WB Manufacturing can design the solutions to meet your environments. Choose from our vast array of furniture and cabinet standards or talk directly to our in-house design team to customize products to fit your space.

We can build it. With over 100 skilled American workforce professionals in our plant in Thorp, WI, WB Manufacturing can build what you need when you need it. Utilizing quality materials and processes to ensure affordable, durable, long lasting products backed by a comprehensive warranty.

We can deliver. Yes, we can facilitate timely, affordable shipment of your products, but we also "deliver". Deliver the best product, the best customer service and the best solutions for what we hope is the best experience one can have when fulfilling your educational, office, health care and industrial needs.

At WB Manufacturing... We Can.



have questions? need information

Call us:

800-242-2303



Customer Service is available 7:30 am - 4:30 pm CST Monday through Friday. We are available to assist you during the planning stage, during the installation and after the clean-up.

Visit our website:

wibenchmfg.com



You'll find product specifications and brochures, images and installation gallery, products for specific vertical and horizontal applications and more on our updated website.

Request design services:

info@wibench.com



Our Engineering, Project Management and Estimating teams can assist with room layout and project elevations drawings.

Send an order or quote:

info@wibench.com



Request for quotes, project registration, shipping or order processing instructions and purchase orders can be easily handled through this email address.

Track your order:

extranet.wibench.com



Customers can simply access information on their orders and shipment status via our extranet.



P - 800.242.2303
F - 715.669.5929
507 E. Grant St.
Thorp, WI 54771

Contents

Casework Overview
pages 4-5

Base Cabinets
pages 6-15

Wall Cabinets
pages 18-21

Accessory Cabinets
page 22

Mail Slots
page 23

Tall Cabinets
pages 24-31

Lockers
page 32

Accessories
page 33

Warranty
page 34-35



Matthews Clinic, GA



The mark of responsible forestry

Look for FSC® certified products (FSC-C100370)



CaseworkUSA® - Casework

With over 10 years designing, building and delivering standard, custom, modular and mobile laminate casework, lockers and furniture for the education, commercial and office markets; CaseworkUSA® has become a leader in quality constructed, cost effective casework. With over 650 available standard cabinets and in-house custom capabilities, **We Can.** provide a tailored solution to your environment.

CaseworkUSA® comes fully assembled, with 30% more dowels than our competitors, ready to install, and backed by a limited lifetime warranty.

Order CaseworkUSA® constructed cabinets by simply removing the H from the sku (HB2330 to B2330).

Features:

Case:	Fully doweled 3/4" cabinet, full sub top and 1/2" inset back
Countertop:	1-1/4" HPL with 3/4" backsplash (sold separately, field installed)
Drawers:	Fully doweled 1/2" TFL drawer box with 3/4" HPL front, wire pull
Drawer Glides:	Standard 3/4" undermount (file drawers have full extension side mount steel ball bearing glide)
Doors:	3/4" HPL, standard wire pull
Hinges:	6-point adjustable concealed hinge
Shelves:	3/4" HPL (fixed are fully doweled, adjustable have 4 double-pin shelf clips)
Finish:	Decorative HPL on door and drawer fronts, finished ends and exposed interiors; white TFL on drawer boxes, unfinished ends, and interiors*
Edge Banding:	0.5mm PVC edge banding on cabinet and shelves, 3mm PVC on doors, drawer fronts and countertop
Base:	3/4" exterior grade plywood ladder or applied base (vinyl base not included)

Base cabinet depth is 23" w/o doors and drawers and 24" w/doors and drawers. Wall cabinet depth is 14" w/o doors and 15" w/doors.
*Wall cabinet bottoms optional in decorative or white



3/4" fully doweled casebody construction



1-1/4" HPL countertop (sold separately)



3mm PVC door and drawer matching edgebanding



Wire pull (standard)



6-point adjustable hinge (standard)



3/4" undermount drawer glide (standard)



Plywood ladder or applied base



3/4" shelves and double pin clips



Large grip recessed handle (optional)



5-knuckle hinge (optional)



Integrated locks (optional)

Standard Laminate Color Options



Complete Wilsonart #60 matte finish high pressure laminate collection available. Other manufactures available upon request.



CaseworkUSA® - Healthcare Casework

In recent years, WB Manufacturing has been called upon by leaders in the industry to bring its quality product, on-time delivery and competitive pricing to the healthcare market. Working directly with healthcare professionals, WB Manufacturing has developed CaseworkUSA® - Healthcare.

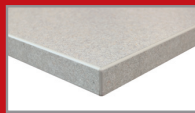
Whether in patient or exam rooms, assisted living or long-term care facilities, nursing or reception stations, WB Manufacturing can design, build and deliver healthcare casework and furniture with the functionality and style to meet your facilities needs.

Features:

- Case:** Fully doweled 3/4" cabinet, upper cabinets have 1" top and bottom
- Countertop:** 1-1/4" HPL with 3/4" backsplash (sold separately, field installed)
- Drawers:** Fully doweled 5/8" drawer box with 3/4" front, wire pull standard
- Drawer Glides:** Standard full extension side mount glides and file management systems on designated drawers
- Doors:** 3/4" doors, wire pull standard on bases, 1" door projection below cabinet standard on uppers
- Hinges:** 6-point adjustable concealed hinge, 120 & 170 degree available
- Shelves:** 1" shelf sealed on all sides (shelf supports with pins and fixed supports to hold shelves in place)
- Finish:** Standard or Custom laminates, matching interior and edge banding
- Edge Banding:** 0.5mm PVC edge banding, 1.4mm PVC on shelves, doors, drawer fronts and countertop
- Base:** 3/4" exterior grade plywood ladder or applied base (vinyl base not included)



3/4" fully doweled casebody construction



1-1/4" HPL countertop (sold separately)



1" door projection (standard on uppers)



Wire pull (standard on bases)



6-point adjustable hinge (standard)



Full extension side mount drawer glide (standard)



Plywood ladder or applied base



1" shelves sealed completely on all sides



0.5mm PVC casebody matching edgebanding



1.4mm PVC door and drawer matching edgebanding



Integrated single or gang locks (optional)



File drawer system (standard on file drawers)

Standard Laminate Color Options



Solar Oak (-DX) American Cherry (-Z09) Honey Maple (-FV) Oiled Cherry (-SR) Kensington Maple (-KA) Antique White (-H) Windsor Mahogany (-24) Cocoa Maple (-A11) Chestnut Woodline (-A24) Wild Cherry (-WC) Pacific Maple (-PM) Hardrock Maple (-HM) Warm Walnut (-WW) Folkstone (-FS) Black (-BK)

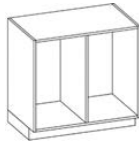
Base Cabinets

Model # HB1100



W: 12 - 36" (3" increments)
H: 25, 29, 33 or 35"
D: 14 or 23"
Open
Empty Interior

Model # HB1110



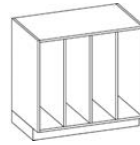
W: 12 - 48" (3" increments)
H: 25, 29, 33 or 35"
D: 14 or 23"
Open
1 Vertical Divider

Model # HB1120



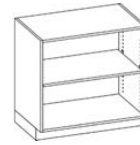
W: 18 - 48" (3" increments)
H: 25, 29, 33 or 35"
D: 14 or 23"
Open
2 Vertical Dividers

Model # HB1130



W: 24 - 48" (3" increments)
H: 25, 29, 33 or 35"
D: 14 or 23"
Open
3 Vertical Dividers

Model # HB1140



W: 12 - 36" (3" increments)
H: 25, 29, 33 or 35"
D: 14 or 23"
Open
1 Adjustable Shelf

Model # HB1150



W: 12 - 36" (3" increments)
H: 25, 29, 33 or 35"
D: 14 or 23"
Open
2 Adjustable Shelves

Model # HB1145



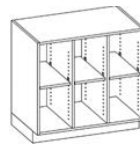
W: 12 - 48" (3" increments)
H: 25, 29, 33 or 35"
D: 14 or 23"
Open
1 Vertical Divider
2 Adjustable Shelves

Model # HB1155



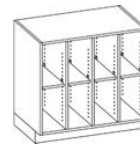
W: 12 - 48" (3" increments)
H: 25, 29, 33 or 35"
D: 14 or 23"
Open
1 Vertical Divider
4 Adjustable Shelves

Model # HB1146



W: 18 - 48" (3" increments)
H: 25, 29, 33 or 35"
D: 14 or 23"
Open
2 Vertical Dividers
3 Adjustable Shelves

Model # HB1136



W: 24 - 48" (3" increments)
H: 25, 29, 33 or 35"
D: 14 or 23"
Open
3 Vertical Dividers
4 Adjustable Shelves

Model # HB1165



W: 18 - 48" (3" increments)
H: 25, 29, 33 or 35"
D: 14 or 23"
Open
2 Vertical Dividers
6 Adjustable Shelves

Model # HB1175



W: 24 - 48" (3" increments)
H: 25, 29, 33 or 35"
D: 14 or 23"
Open
3 Vertical Dividers
8 Adjustable Shelves

Model # HB1160



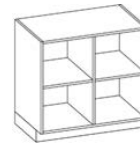
W: 12 - 36" (3" increments)
H: 25, 29, 33 or 35"
D: 14 or 23"
Open
1 Fixed Shelf

Model # HB1170



W: 12 - 36" (3" increments)
H: 25, 29, 33 or 35"
D: 14 or 23"
Open
2 Fixed Shelves

Model # HB1245



W: 12 - 48" (3" increments)
H: 25, 29, 33 or 35"
D: 14 or 23"
Open
1 Vertical Divider
2 Fixed Shelves

Model # HB1255



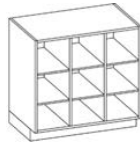
W: 12 - 48" (3" increments)
H: 25, 29, 33 or 35"
D: 14 or 23"
Open
1 Vertical Divider
4 Fixed Shelves

Model # HB1246



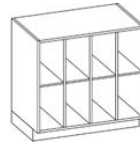
W: 18 - 48" (3" increments)
H: 25, 29, 33 or 35"
D: 14 or 23"
Open
2 Vertical Dividers
3 Fixed Shelves

Model # HB1265



W: 18 - 48" (3" increments)
H: 25, 29, 33 or 35"
D: 14 or 23"
Open
2 Vertical Dividers
6 Fixed Shelves

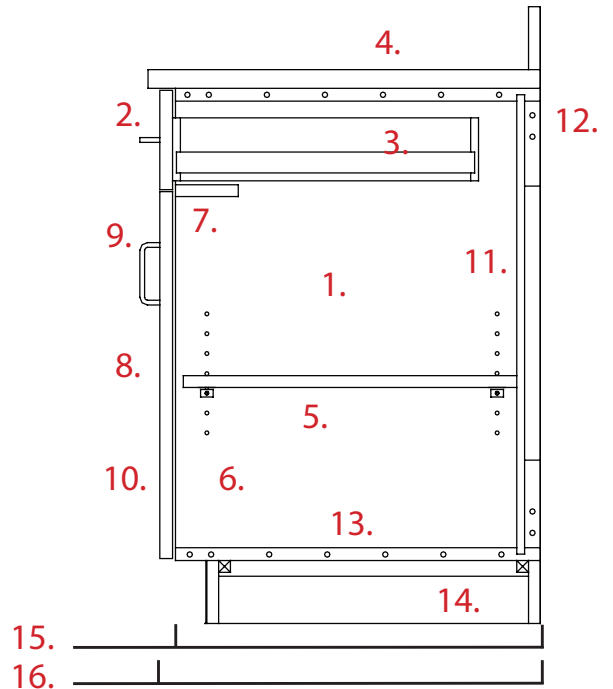
Model # HB1236



W: 24 - 48" (3" increments)
H: 25, 29, 33 or 35"
D: 14 or 23"
Open
3 Vertical Dividers
4 Fixed Shelves

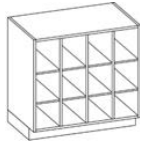
Base Cabinet Overview

1. Fully doweled 3/4" cabinet body with 0.5mm edge banding
2. 3/4" drawer face with 1.4mm edge banding
3. 5/8" drawer box with full extension side mount glides
4. 1-1/4" counter top with 3/4" backsplash (sold separately)
5. 1" shelves, shelf supports with pins and fixed supports
6. Matching cabinet interior
7. Drawer separator doweled in place
8. 3/4" door with 1.4mm edge banding
9. Standard wire pulls
10. 6-point adjustable hinge, 120 & 170 degree available
11. Inset back, fully housed at top, bottom and sides
12. Mounting rails top & bottom
13. 3/4" cabinet bottom
14. 3/4" exterior grade plywood ladder or applied base
15. 23" standard cabinet body depth
16. 24" cabinet depth with doors/drawers



Depths shown indicate casebody depth. Add 1" for doors and drawers.

Model # HB1275



W: 24 - 48" (3" increments)
H: 25, 29, 33 or 35"
D: 14 or 23"
Open
3 Vertical Dividers
8 Fixed Shelves

Model # HB1280



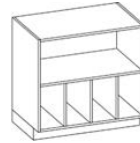
W: 24 - 48" (3" increments)
H: 25, 29, 33 or 35"
D: 14 or 23"
Open
1 Fixed Shelf
1 Half-Height Divider

Model # HB1285



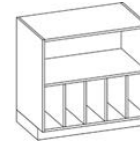
W: 18 - 48" (3" increments)
H: 25, 29, 33 or 35"
D: 14 or 23"
Open
1 Fixed Shelf
2 Half-Height Dividers

Model # HB1290



W: 24 - 48" (3" increments)
H: 25, 29, 33 or 35"
D: 14 or 23"
Open
1 Fixed Shelf
3 Half-Height Dividers

Model # HB1295



W: 30 - 48" (3" increments)
H: 25, 29, 33 or 35"
D: 14 or 23"
Open
1 Fixed Shelf
4 Half-Height Dividers

Model # HB2000



W: 12 - 36" (3" increments)
H: 29, 33 or 35"
D: 23"
Single Drawer Over Open
Empty Interior

Model # HB2200



W: 24 - 36" (3" increments)
H: 29, 33 or 35"
D: 23"
Double Drawer Over Open
Empty Interior

Model # HB2010



W: 12 - 36" (3" increments)
H: 29, 33 or 35"
D: 23"
Single Drawer Over Open
1 Adjustable Shelf

Model # HB2210



W: 24 - 36" (3" increments)
H: 29, 33 or 35"
D: 23"
Double Drawer Over Open
1 Adjustable Shelf

Model # HB2020



W: 12 - 36" (3" increments)
H: 29, 33 or 35"
D: 23"
Single Drawer Over Open
1 Fixed Shelf

Base Cabinets

Model # HB2220



W: 24 - 36" (3" increments)
H: 29, 33 or 35"
D: 23"
Double Drawer Over Open
1 Fixed Shelf

Model # HB2304



W: 12 - 48" (3" Increments)
H: 29, 33 or 35"
D: 23"
Single Drawer Over Open
1 Vertical Divider

Model # HB2404



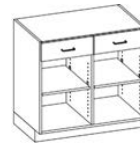
W: 24 - 48" (3" increments)
H: 29, 33 or 35"
D: 23"
Double Drawer Over Open
1 Vertical Divider

Model # HB2305



W: 12 - 48" (3" Increments)
H: 29, 33 or 35"
D: 23"
Single Drawer Over Open
1 Vertical Divider
2 Adjustable Shelves

Model # HB2405



W: 24 - 48" (3" increments)
H: 29, 33 or 35"
D: 23"
Double Drawer Over Open
1 Vertical Divider
2 Adjustable Shelves

Model # HB2306



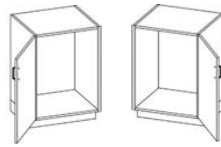
W: 12 - 48" (3" Increments)
H: 29, 33 or 35"
D: 23"
Single Drawer Over Open
1 Vertical Divider
2 Fixed Shelves

Model # HB2406



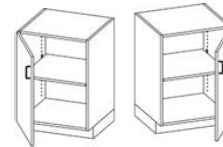
W: 24 - 48" (3" increments)
H: 29, 33 or 35"
D: 23"
Double Drawer Over Open
1 Vertical Divider
2 Fixed Shelves

Model # HB3000/3005



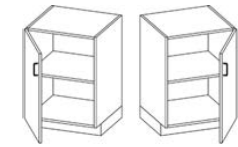
W: 12 - 24" (3" increments)
H: 29, 33 or 35"
D: 19, 23"
Full Height Door
Left/Right Hinged
Empty Interior
Available Trash Door

Model # HB3010/3015



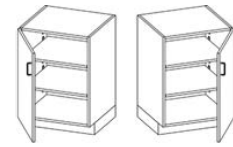
W: 12 - 24" (3" increments)
H: 29, 33 or 35"
D: 19, 23"
Full Height Door
Left/Right Hinged
1 Adjustable Shelf

Model # HB3020/3025



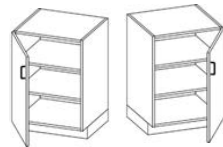
W: 12 - 24" (3" increments)
H: 29, 33 or 35"
D: 19, 23"
Full Height Door
Left/Right Hinged
1 Fixed Shelf

Model # HB3110/3120



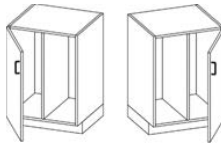
W: 12 - 24 (3" increments)
H: 25, 29, 33 or 35"
D: 19, 23"
Full Height Door
Left/Right Hinged
2 Adjustable Shelves

Model # HB3130/3140



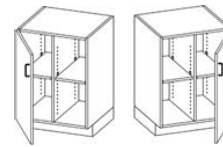
W: 12 - 24 (3" increments)
H: 25, 29, 33 or 35"
D: 19, 23"
Full Height Door
Left/Right Hinged
2 Fixed Shelves

Model # HB3200/3205



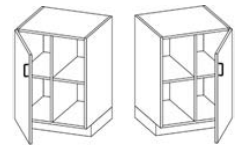
W: 12 - 24 (3" increments)
H: 25, 29, 33 or 35"
D: 23"
Full Height Door
Left/Right Hinged
1 Vertical Divider

Model # HB3210/3215



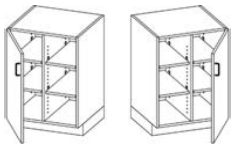
W: 18, 21 or 24"
H: 25, 29, 33 or 35"
D: 23"
Full Height Door
Left/Right Hinged
1 Vertical Divider
2 Adjustable Shelves

Model # HB3220/3225



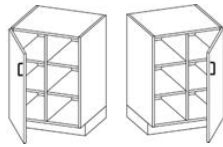
W: 18, 21 or 24"
H: 25, 29, 33 or 35"
D: 23"
Full Height Door
Left/Right Hinged
1 Vertical Divider
2 Fixed Shelves

Model # HB3230/3235



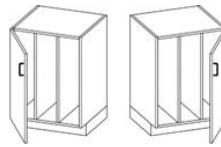
W: 18, 21 or 24"
H: 25, 29, 33 or 35"
D: 23"
Full Height Door
Left/Right Hinged
1 Vertical Divider
4 Adjustable Shelves

Model # HB3240/3245



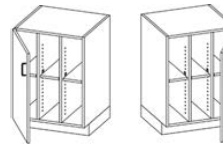
W: 18, 21 or 24"
H: 25, 29, 33 or 35"
D: 23"
Full Height Door
Left/Right Hinged
1 Vertical Divider
4 Fixed Shelves

Model # HB3815/3825



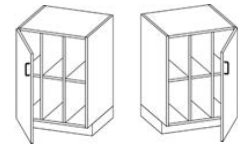
W: 18, 21 or 24"
H: 25, 29, 33 or 35"
D: 23"
Full Height Door
Left/Right Hinged
2 Vertical Dividers

Model # HB3835/3836



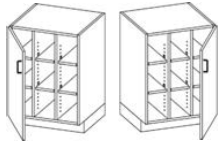
W: 18, 21 or 24"
H: 25, 29, 33 or 35"
D: 23"
Full Height Door
Left/Right Hinged
2 Vertical Dividers
3 Adjustable Shelves

Model # HB3845/3846



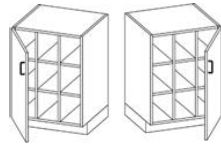
W: 18, 21 or 24"
H: 25, 29, 33 or 35"
D: 23"
Full Height Door
Left/Right Hinged
2 Vertical Dividers
3 Fixed Shelves

Model # HB3865/3866



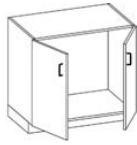
W: 18, 21 or 24"
H: 25, 29, 33 or 35"
D: 23"
Full Height Door
Left/Right Hinged
2 Vertical Dividers
6 Adjustable Shelves

Model # HB3875/3876



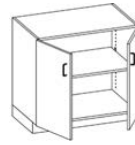
W: 18, 21 or 24"
H: 25, 29, 33 or 35"
D: 23"
Full Height Door
Left/Right Hinged
2 Vertical Dividers
6 Fixed Shelves

Model # HB3100



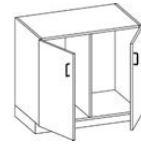
W: 24 - 36" (3" increments)
H: 25, 29, 33 or 35"
D: 19, 23"
Double Full Height Doors
Empty Interior
Available Trash Door

Model # HB3112



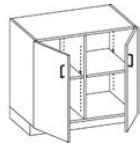
W: 24 - 36" (3" increments)
H: 25, 29, 33 or 35"
D: 19, 23"
Double Full Height Doors
1 Adjustable Shelf

Model # HB3101



W: 24 - 48" (3" increments)
H: 25, 29, 33 or 35"
D: 23"
Double Full Height Doors
1 Vertical Divider

Model # HB3145



W: 24 - 48" (3" increments)
H: 25, 29, 33 or 35"
D: 23"
Double Full Height Doors
1 Vertical Divider
2 Adjustable Shelves

Model # HB3300



W: 24 - 48" (3" increments)
H: 25, 29, 33 or 35"
D: 23"
Double Full Height Doors
2 Vertical Dividers

Model # HB3135



W: 24 - 48" (3" increments)
H: 25, 29, 33 or 35"
D: 23"
Double Full Height Doors
2 Vertical Dividers
3 Adjustable Shelves

Model # HB3122



W: 24 - 36" (3" increments)
H: 25, 29, 33 or 35"
D: 19, 23"
Double Full Height Doors
2 Adjustable Shelves

Model # HB3155



W: 24 - 48" (3" increments)
H: 25, 29, 33 or 35"
D: 23"
Double Full Height Doors
1 Vertical Divider
4 Adjustable Shelves

Model # HB3165



W: 24 - 36" (3" increments)
H: 25, 29, 33 or 35"
D: 23"
Double Full Height Doors
2 Vertical Dividers
6 Adjustable Shelves

Model # HB3115



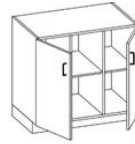
W: 24 - 36" (3" increments)
H: 25, 29, 33 or 35"
D: 19, 23"
Double Full Height Doors
1 Fixed Shelf

Model # HB3146



W: 24 - 48" (3" increments)
H: 25, 29, 33 or 35"
D: 23"
Double Full Height Doors
1 Vertical Divider
2 Fixed Shelves

Model # HB3136



W: 24 - 48" (3" increments)
H: 25, 29, 33 or 35"
D: 23"
Double Full Height Doors
2 Vertical Dividers
3 Fixed Shelves

Model # HB3125



W: 24 - 36" (3" increments)
H: 25, 29, 33 or 35"
D: 19, 23"
Double Full Height Doors
2 Fixed Shelves

Model # HB3255



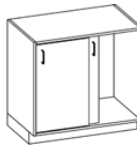
W: 24 - 48" (3" increments)
H: 25, 29, 33 or 35"
D: 23"
Double Full Height Doors
1 Vertical Divider
4 Fixed Shelves

Model # HB3265



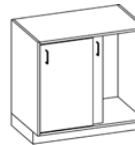
W: 24 - 48" (3" increments)
H: 25, 29, 33 or 35"
D: 23"
Double Full Height Doors
2 Vertical Dividers
6 Fixed Shelves

Model # HB3400



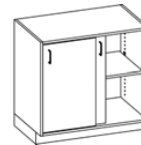
W: 24 - 36" (3" increments)
H: 25, 29, 33 or 35"
D: 23"
Sliding Doors
Empty Interior

Model # HB3401



W: 24 - 48" (3" increments)
H: 25, 29, 33 or 35"
D: 23"
Sliding Doors
1 Vertical Divider

Model # HB3405

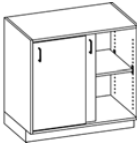


W: 24 - 36" (3" increments)
H: 25, 29, 33 or 35"
D: 23"
Sliding Doors
1 Adjustable Shelf

Depths shown indicate casebody depth. Add 1" for doors and drawers.

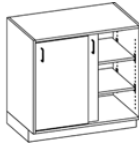
Base Cabinets

Model # HB3406



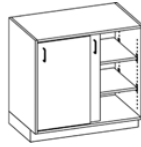
W: 24 - 48" (3" increments)
H: 25, 29, 33 or 35"
D: 23"
Sliding Doors
1 Vertical Divider
2 Adjustable Shelves

Model # HB3410



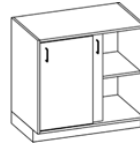
W: 24 - 36" (3" increments)
H: 25, 29, 33 or 35"
D: 23"
Sliding Doors
2 Adjustable Shelves

Model # HB3411



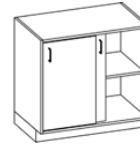
W: 24 - 48" (3" increments)
H: 25, 29, 33 or 35"
D: 23"
Sliding Doors
1 Vertical Divider
4 Adjustable Shelves

Model # HB3415



W: 24 - 36" (3" increments)
H: 25, 29, 33 or 35"
D: 23"
Sliding Doors
1 Fixed Shelf

Model # HB3416



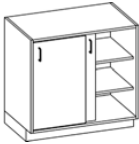
W: 24 - 48" (3" increments)
H: 25, 29, 33 or 35"
D: 23"
Sliding Doors
1 Vertical Divider
2 Fixed Shelves

Model # HB3420



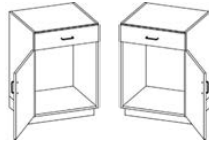
W: 24 - 36" (3" increments)
H: 25, 29, 33 or 35"
D: 23"
Sliding Doors
2 Fixed Shelves

Model # HB3421



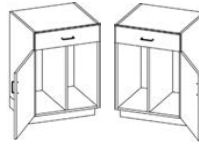
W: 24 - 48" (3" increments)
H: 25, 29, 33 or 35"
D: 23"
Sliding Doors
1 Vertical Divider
4 Fixed Shelves

Model # HB2100/2105*



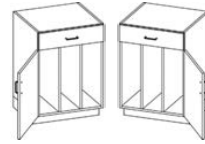
W: 12 - 24" (3" increments)
H: 25, 29, 33 or 35"
D: 23"
Single Drawer Over Door
Left/Right Hinged
Empty Interior

Model # HB2140/2145*



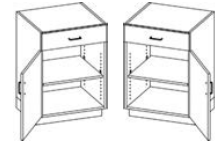
W: 12 - 24" (3" increments)
H: 25, 29, 33 or 35"
D: 23"
Single Drawer Over Door
Left/Right Hinged
1 Vertical Divider

Model # HB2170/2175*



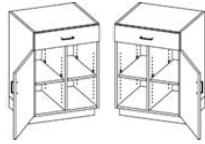
W: 18, 21 or 24"
H: 25, 29, 33 or 35"
D: 23"
Single Drawer Over Door
Left/Right Hinged
2 Vertical Dividers

Model # HB2110/2120*



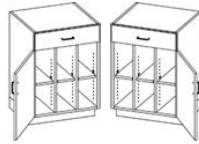
W: 12 - 24" (3" increments)
H: 25, 29, 33 or 35"
D: 23"
Single Drawer Over Door
Left/Right Hinged
1 Adjustable Shelf

Model # HB2150/2155*



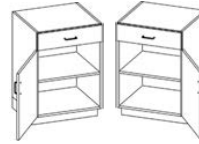
W: 12 - 24" (3" increments)
H: 25, 29, 33 or 35"
D: 23"
Single Drawer Over Door
Left/Right Hinged
1 Vertical Divider
2 Adjustable Shelves

Model # HB2180/2185*



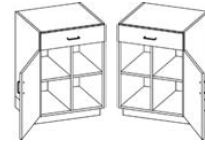
W: 18, 21 or 24"
H: 25, 29, 33 or 35"
D: 23"
Single Drawer Over Door
Left/Right Hinged
2 Vertical Dividers
3 Adjustable Shelves

Model # HB2130/2135*



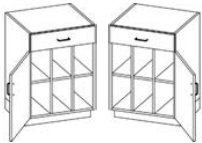
W: 12 - 24" (3" increments)
H: 25, 29, 33 or 35"
D: 23"
Single Drawer Over Door
Left/Right Hinged
1 Fixed Shelf

Model # HB2160/2165*



W: 12 - 24" (3" increments)
H: 25, 29, 33 or 35"
D: 23"
Single Drawer Over Door
Left/Right Hinged
1 Vertical Divider
2 Fixed Shelves

Model # HB2190/2195*



W: 18, 21 or 24"
H: 25, 29, 33 or 35"
D: 23"
Single Drawer Over Door
Left/Right Hinged
2 Vertical Dividers
3 Fixed Shelves

Model # HB2301



W: 24 - 36" (3" increments)
H: 25, 29, 33 or 35"
D: 23"
Single Dwr Over Double Dr
Empty Interior

Model # HB2401



W: 24 - 36" (3" increments)
H: 25, 29, 33 or 35"
D: 23"
Double Dwr Over Double Dr
Empty Interior

Model # HB2300



W: 24 - 36" (3" increments)
H: 25, 29, 33 or 35"
D: 23"
Single Dwr Over Double Dr
1 Adjustable Shelf

Model # HB2400



W: 24 - 36" (3" increments)
H: 25, 29, 33 or 35"
D: 23"
Double Dwr Over Double Dr
1 Adjustable Shelf

*Add 1 to these skus for a drawer with pull out shelf. Example: HB6035 becomes HB6036, HB6070 becomes HB6071.

Pull out shelf option available up to 24" wide. See page 13 for illustration.

Depths shown indicate casebody depth. Add 1" for doors and drawers.



Chippewa Valley Orthopedics, WI

Base Cabinets

Model # HB2330



W: 24 - 36" (3" increments)
H: 25, 29, 33 or 35"
D: 23"
Single Dwr Over Double Dr
1 Fixed Shelf

Model # HB2430



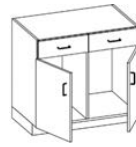
W: 24 - 36" (3" increments)
H: 25, 29, 33 or 35"
D: 23"
Double Dwr Over Double Dr
1 Fixed Shelf

Model # HB2302



W: 24 - 48" (3" increments)
H: 25, 29, 33 or 35"
D: 23"
Single Dwr Over Double Dr
1 Vertical Divider

Model # HB2402



W: 24 - 48" (3" increments)
H: 25, 29, 33 or 35"
D: 23"
Double Dwr Over Double Dr
1 Vertical Divider

Model # HB2325



W: 24 - 48" (3" increments)
H: 25, 29, 33 or 35"
D: 23"
Single Dwr Over Double Dr
1 Vertical Divider
2 Adjustable Shelves

Model # HB2425



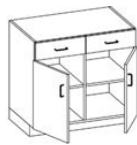
W: 24 - 48" (3" increments)
H: 25, 29, 33 or 35"
D: 23"
Double Dwr Over Double Dr
1 Vertical Divider
2 Adjustable Shelves

Model # HB2331



W: 24 - 36" (3" increments)
H: 25, 29, 33 or 35"
D: 23"
Single Dwr Over Double Dr
1 Vertical Divider
2 Fixed Shelves

Model # HB2431



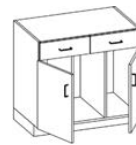
W: 24 - 48" (3" increments)
H: 25, 29, 33 or 35"
D: 23"
Double Dwr Over Double Dr
1 Vertical Divider
2 Fixed Shelves

Model # HB2303



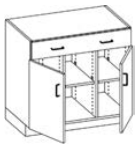
W: 24 - 36" (3" increments)
H: 25, 29, 33 or 35"
D: 23"
Single Dwr Over Double Dr
2 Vertical Dividers

Model # HB2403



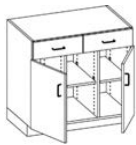
W: 24 - 48" (3" increments)
H: 25, 29, 33 or 35"
D: 23"
Double Dwr Over Double Dr
2 Vertical Dividers

Model # HB2326



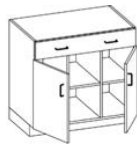
W: 24 - 36" (3" increments)
H: 25, 29, 33 or 35"
D: 23"
Single Dwr Over Double Dr
2 Vertical Dividers
3 Adjustable Shelves

Model # HB2426



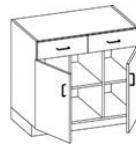
W: 24 - 48" (3" increments)
H: 25, 29, 33 or 35"
D: 23"
Double Dwr Over Double Dr
2 Vertical Dividers

Model # HB2332



W: 24 - 48" (3" increments)
H: 25, 29, 33 or 35"
D: 23"
Single Dwr Over Double Dr
2 Vertical Dividers
3 Fixed Shelves

Model # HB2432



W: 24 - 48" (3" increments)
H: 25, 29, 33 or 35"
D: 23"
Double Dwr Over Double Dr
2 Vertical Dividers
3 Fixed Shelves

Model # HB6035*



W: 12 - 36" (3" increments)
H: 29, 33 or 35
D: 19, 23"
1 Standard Drawer (6 1/8")
2 Equal Drawers

Model # HB6045*



W: 12 - 36" (3" increments)
H: 29, 33 or 35"
D: 19, 23"
1 Standard Drawer (6 1/8")
3 Equal Drawers

Model # HB6055*



W: 12 - 36" (3" increments)
H: 29, 33 or 35
D: 23"
1 Standard Drawer (6 1/8")
4 Equal Drawer

Model # HB6070*



W: 12 - 36" (3" increments)
H: 33 or 35
D: 23"
2 Standard Drawers (6 1/8")
2 Equal Drawers

Model # HB6075*



W: 12 - 36" (3" increments)
H: 29, 33 or 35"
D: 19, 23"
3 Standard Drawers (6 1/8")
1 Drawer

Model # HB6010



W: 12 - 36" (3" increments)
H: 12 or 18"
D: 23"
1 Drawer (non file)

Model # HB6020



W: 12 - 36" (3" increments)
H: 29, 33 or 35"
D: 23"
2 Equal Drawers

Model # HB6030



W: 12 - 36" (3" increments)
H: 25, 29, 33 or 35"
D: 23"
3 Equal Drawers

Model # HB6040



W: 12 - 36" (3" increments)
H: 29, 33 or 35"
D: 23"
4 Equal Drawers

Model # HB6050



W: 12 - 36" (3" increments)
H: 33 or 35"
D: 23"
5 Equal Drawers

Model # HB6060



W: 12 - 36" (3" increments)
H: 33 or 35"
D: 23"
6 Equal Drawers

Model # HB7485



W: 24 - 36" (3" increments)
H: 29, 33 or 35"
D: 23"
1 Single Drawer (6 1/8")
3 Equal Height Drawers
- 1 Full Width Drawer
- 2 Double Drawers

Model # HB6512



W: 24 - 36" (3" increments)
H: 33 or 35"
D: 23"
5 Equal Height Drawers
- 1 Double Drawer
- 4 Single Drawers

Model # HB7415



W: 24 - 36" (3" increments)
H: 29, 33 or 35"
D: 23"
1 Single Drawer (6 1/8")
3 Equal Height Drawers
- 3 Double Drawers

Model # HB6515



W: 24 - 36" (3" increments)
H: 33 or 35"
D: 23"
1 Double Drawer (6 1/8")
4 Equal Height Drawers
- 4 Single Drawers

Model # HB7512



W: 24 - 36" (3" increments)
H: 33 or 35"
D: 23"
1 Single Drawer (6 1/8")
4 Equal Height Drawers
- 4 Double Drawers

Model # HB6652



W: 24 - 36" (3" increments)
H: 33 or 35"
D: 23"
6 Equal Height Drawers
- 1 Double Drawer
- 5 Single Drawers

Model # HB7615



W: 24 - 36" (3" increments)
H: 33 or 35"
D: 23"
1 Single Drawer (6 1/8")
5 Equal Height Drawers
- 5 Double Drawers

Model # HB6315

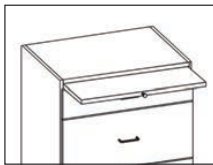


W: 24 - 36" (3" increments)
H: 29, 33 or 35"
D: 23"
1 Double Drawer (6 1/8")
2 Equal Height Drawers
- 2 Single Drawers

Model # HB6415



W: 24 - 36" (3" increments)
H: 29, 33 or 35"
D: 23"
1 Double Drawer (6 1/8")
3 Equal Height Drawers
- 3 Single Drawers



*Add 1 to these skus for a drawer with pull out shelf. Example: HB6035 becomes HB6036, HB6070 becomes HB6071. Pull out shelf option available up to 24" wide.

Depths shown indicate casebody depth. Add 1" for doors and drawers.

Base Cabinets

Model # HB9200



W: 15-3/4 or 18-3/4"
H: 29 or 33"
D: 19, 23"
2 File Drawers

Model # HB9205*



W: 15-3/4 or 18-3/4"
H: 29 or 33"
D: 19, 23"
1 Single Drawer (6 1/8")
1 Single Drawer (balance)
1 File Drawer

Model # HB9310*



W: 15-3/4 or 18-3/4"
H: 35"
D: 19, 23"
1 Single Drawer (6 1/8")
2 File Drawers

Model # HB9220*



W: 15-3/4 or 18-3/4"
H: 33 or 35"
D: 19, 23"
1 Single Drawer (6 1/8")
2 Equal Drawers
1 File Drawer

Model # HB9210



W: 15-3/4 or 18-3/4"
H: 41"
D: 23"
3 File Drawers

Model # HB9215



W: 15-3/4 or 18-3/4"
H: 54"
D: 23"
4 File Drawers

Model # HB9230

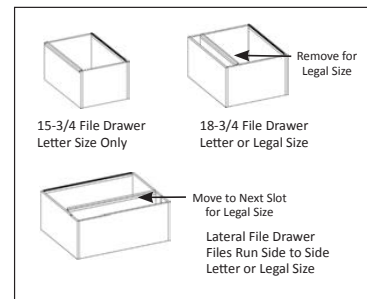


W: 24, 30 or 36"
H: 29, 33 or 35"
D: 23"
2 Lateral File Drawers

Model # HB9400/10/20



W: 36 - 48" (3" increments)
H: 29, 33 or 35"
D: 35"
3/4/5 Equal Drawers
(B9420 not available in 29" H)



Model # HK9105



W: 12 - 24"***
H: 2.5"
D: 20"
Stand Alone
Pull Out Board

Model # HK9150



W: 12 - 36"***
H: 3"
D: 20"
Single Book Box
Pull Out Drawer
KL8400 Slide Only

Model # HK9100



W: 12 - 36"***
H: 5-1/4 or 6.5"
D: 20"
Single Book Box
Open

Model # HK9101



W: 30 - 48"***
H: 5-1/4 or 6.5"
D: 20"
Double Book Box
Open

Model # HK9120



W: 12 - 36"***
H: 5-1/4 or 6.5"
D: 20"
Single Book Box
Pull Out Drawer

Model # HK9121



W: 30 - 48"***
H: 5-1/4 or 6.5"
D: 20"
Double Book Box
Pull Out Drawers

Model # HK9200



W: 12 - 36"***
H: 3-1/4"
D: 20"
Single Book Box
Pull Out Drawer

Model # HK9300



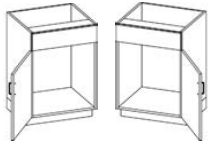
W: 31.75"
H: 12"
D: 18"
Prescription Desk w/1-1/4"
Work Surface, Hood and Pull
Out Drawer



*Add 1 to these skus for a
drawer with pull out shelf.
Example: HB9205 becomes
HB9206, HB9220 becomes
HB9221.

***3" increments

Model # HB4110/4120



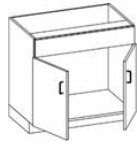
W: 15 - 24" (3" increments)
H: 25, 29, 33 or 35"
D: 19, 23"
Sink Cabinet
Blank Panel
Door Left/Right Hinged

Model # HB4002



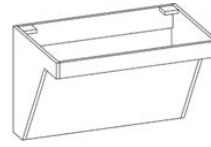
W: 24 - 48" (3" increments)
H: 25, 29, 33 or 35"
D: 19, 23"
Sink Cabinet
Full Height Double Doors

Model # HB4102



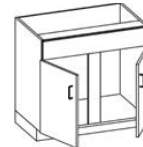
W: 24 - 48" (3" increments)
H: 25, 29, 33 or 35"
D: 19, 23"
Sink Cabinet
Blank Panel
Double Doors

Model # HADAS



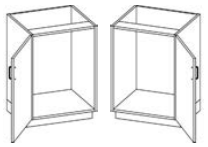
W: 30 - 48" (3" increments)
H: 23 1/4" (for 34" countertop)
D: 23"
ADA Compliant

Model # HB4133



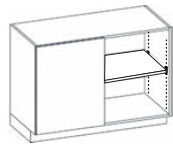
W: 51 - 60" (3" increments)
H: 29, 33 or 35"
D: 23"
Sink Cabinet, Oversized
Blank Panel,
Double Doors

Model # HB4010/4020



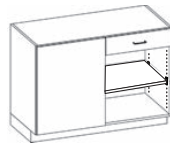
W: 15 - 24" (3" increments)
H: 25, 29, 33 or 35"
D: 23"
Sink Cabinet
Full Height Door
Left/Right Hinged

Model # HB2500/2501



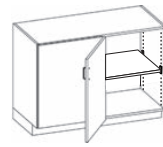
W: 42, 45 or 48"
H: 29, 33 or 35"
D: 23"
Blind Corner
Panel Left/Right
Open
1 Adjustable Shelf

Model # HB2535/2545



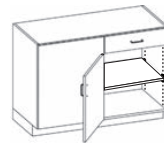
W: 42, 45 or 48"
H: 29, 33 or 35"
D: 23"
Blind Corner
Panel Left/Right
Drawer Over Open
1 Adjustable Shelf

Model # HB2510/2520



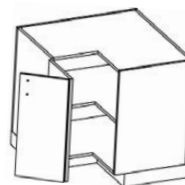
W: 42, 45 or 48"
H: 29, 33 or 35"
D: 23"
Blind Corner
Panel Left/Right
Full Door
1 Adjustable Shelf

Model # HB2530/2540

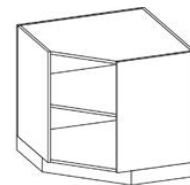


W: 42, 45 or 48"
H: 29, 33 or 35"
D: 23"
Blind Corner Panel Left/Right
Drawer Over Door
1 Adjustable Shelf

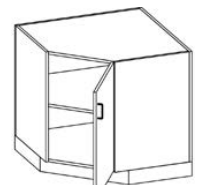
Model #	Description	WxHxD
HB2800	Corner Open, Empty Interior (Square Inside Corner)	36"x29,33,35"x36"
HB2801	Corner Open, Adjustable Shelf	36"x29,33,35"x36"
HB2802	Corner Open, Rotating Shelf	36"x33,35"x36"
HB2805/2815	Corner Left/Right Hinge Door, Empty Interior	36"x29,33,35"x36"
HB2810/2820	Corner Left/Right Hinge Door, Adjustable Shelf	36"x29,33,35"x36"
HB2811/2821	Corner Left/Right Hinge Door, Rotating Shelf	36"x33,35"x36"
HB2900	Corner Open, Empty Interior (45° Corner)	36"x29,33,35"x36"
HB2901	Corner Open, Adjustable Shelf	36"x29,33,35"x36"
HB2902	Corner Open, Rotating Shelf	36"x33,35"x36"
HB2905/2915	Corner Left/Right Hinge Door, Empty Interior	36"x29,33,35"x36"
HB2910/2920	Corner Left/Right Hinge Door, Adjustable Shelf	36"x29,33,35"x36"
HB2911/2921	Corner Left/Right Hinge Door, Rotating Shelf	36"x33,35"x36"



HB2810 shown



HB2900 shown



HB2920 shown

Depths shown indicate casebody depth. Add 1" for doors and drawers.





Medford Vet Clinic

Colby, WI

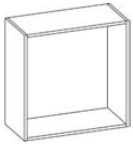
Animals are a bigger part of American families than ever before. And just like them, people want to keep their pets happy and healthy. When Medford Vet Clinic opened its satellite clinic in Colby, WI; they needed standard and custom casework solutions to facilitate their exam, laboratory, retail, employee and reception areas.

WB Manufacturing designed, built and delivered a custom install comprised of our standard casework and shelving and in-house design services to create a functional, welcoming space for Medford's employees, clients and their pets.



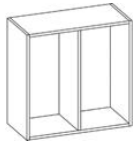
Wall Cabinets

Model # HW1100



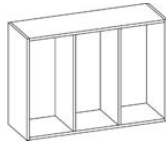
W: 12 - 36" (3" increments)
H: 12, 15, 18, 24, 30, 36, 42, 48"
D: 13"
Open
Empty Interior

Model # HW1175



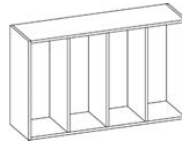
W: 12 - 48" (3" increments)
H: 12, 15, 18, 24, 30, 36, 42, 48"
D: 13"
Open
1 Vertical Divider

Model # HW1185



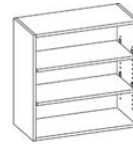
W: 24 - 48" (3" increments)
H: 12, 15, 18, 24, 30, 36, 42, 48"
D: 13"
Open
2 Vertical Dividers

Model # HW1195



W: 24 - 48" (3" increments)
H: 12, 15, 18, 24, 30, 36, 42, 48"
D: 13"
Open
3 Vertical Dividers

Model # HW1180



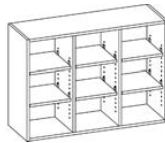
W: 12 - 36" (3" increments)
H: 12, 15, 18, 24, 30, 36, 42, 48"
D: 13"
Open
Adjustable Shelves*

Model # HW1155



W: 24 - 48" (3" increments)
H: 18, 24, 30, 36, 42, 48"
D: 13"
Open
3 Vertical Dividers
Adjustable Shelves*

Model # HW1165



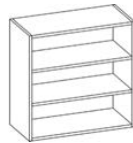
W: 24 - 48" (3" increments)
H: 18, 24, 30, 36, 42, 48"
D: 13"
Open
2 Vertical Dividers
Adjustable Shelves*

Model # HW1170



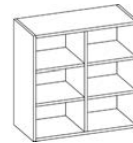
W: 24 - 48" (3" increments)
H: 18, 24, 30, 36, 42, 48"
D: 13"
Open
3 Vertical Dividers
Adjustable Shelves*

Model # HW1110



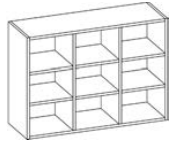
W: 12 - 36" (3" increments)
H: 12, 15, 18, 24, 30, 36, 42, 48"
D: 13"
Open
Fixed Shelves*

Model # HW1120



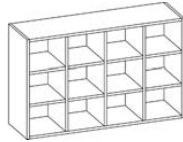
W: 12 - 48" (3" increments)
H: 18, 24, 30, 36, 42, 48"
D: 13"
Open
1 Vertical Divider
Fixed Shelves*

Model # HW1130



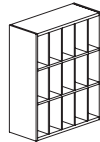
W: 12 - 48" (3" increments)
H: 18, 24, 30, 36, 42, 48"
D: 13"
Open
2 Vertical Dividers
Fixed Shelves*

Model # HW1140



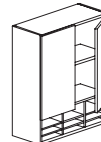
W: 24 - 48" (3" increments)
H: 18, 24, 30, 36, 42, 48"
D: 13"
Open
3 Vertical Dividers
Fixed Shelves*

Contact Customer Service



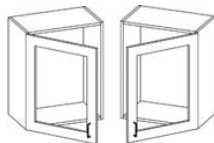
W: 32"
H: 40"
D: 13-1/4"
Lateral Organizer

Contact Customer Service



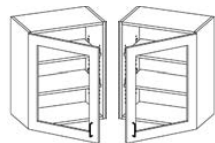
W: 32"
H: 36, 40"
D: 13"
Form Holder Cabinet
Double Door

Model # HW2600/2610



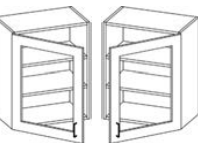
W: 12 - 24" (3" increments)
H: 12, 15, 18, 24, 30, 36, 42, 48"
D: 13"
Single Framed Glass Door
Left/Right Hinged
Empty Interior

Model # HW2710/2720



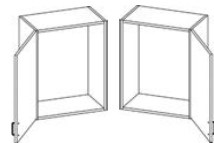
W: 12 - 24" (3" increments)
H: 18, 24, 30, 36, 42, 48"
D: 13"
Single Framed Glass Door
Left/Right Hinged
Adjustable Shelves*

Model # HW2730/2740



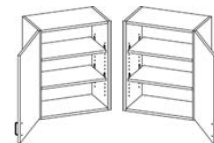
W: 12 - 24" (3" increments)
H: 18, 24, 30, 36, 42, 48"
D: 13"
Single Framed Glass Door
Left/Right Hinged
Fixed Shelves*

Model # HW2000/2010



W: 12 - 24" (3" increments)
H: 12, 15, 18, 24, 30, 36, 42, 48"
D: 13"
Single Door
Left/Right Hinged
Empty Interior

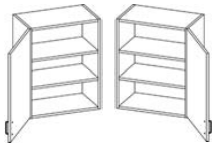
Model # HW2110/2120



W: 12 - 24" (3" increments)
H: 18, 24, 30, 36, 42, 48"
D: 13"
Single Door
Left/Right Hinged
Adjustable Shelves*

Depths shown indicate casebody depth. Add 1" for doors and drawers.

Model # HW2130/2140



W: 12 - 24" (3" increments)
H: 18, 24, 30, 36, 42, 48"
D: 13"
Single Door
Left/Right Hinged
Fixed Shelves*

Model # HW2105



W: 24 - 36" (3" increments)
H: 12, 15, 18, 24, 30, 36, 42, 48"
D: 13"
Double Doors
Empty Interior

Model # HW2182



W: 24 - 36" (3" increments)
H: 18, 24, 30, 36, 42, 48"
D: 13"
Double Doors
Adjustable Shelves*

Model # HW2175



W: 24 - 36" (3" increments)
H: 18, 24, 30, 36, 42, 48"
D: 13"
Double Doors
Fixed Shelves*

Model # HW2115



W: 24 - 48" (3" increments)
H: 12, 15, 18, 24, 30, 36, 42, 48"
D: 13"
Double Doors
1 Vertical Divider

Model # HW2155



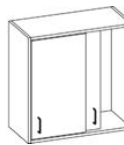
W: 24 - 48" (3" increments)
H: 18, 24, 30, 36, 42, 48"
D: 13"
Double Doors
1 Vertical Divider
Adjustable Shelves*

Model # HW2185



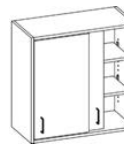
W: 24 - 48" (3" increments)
H: 18, 24, 30, 36, 42, 48"
D: 13"
Double Doors
1 Vertical Divider
Fixed Shelves*

Model # HW2305



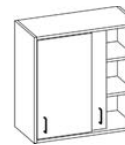
W: 24 - 36" (3" increments)
H: 12, 15, 18, 24, 30, 36, 42, 48"
D: 13"
Double Sliding Doors
Empty Interior

Model # HW2382



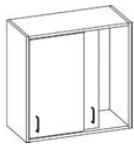
W: 24 - 36" (3" increments)
H: 18, 24, 30, 36, 42, 48"
D: 13"
Double Sliding Doors
Adjustable Shelves*

Model # HW2375



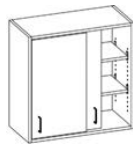
W: 24 - 48" (3" increments)
H: 18, 24, 30, 36, 42, 48"
D: 13"
Double Sliding Doors
Fixed Shelves*

Model # HW2315



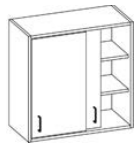
W: 24 - 48" (3" increments)
H: 12, 15, 18, 24, 30, 36, 42, 48"
D: 13"
Double Sliding Doors
1 Vertical Divider

Model # HW2355



W: 24 - 48" (3" increments)
H: 18, 24, 30, 36, 42, 48"
D: 13"
Double Sliding Doors
1 Vertical Divider
Adjustable Shelves*

Model # HW2385

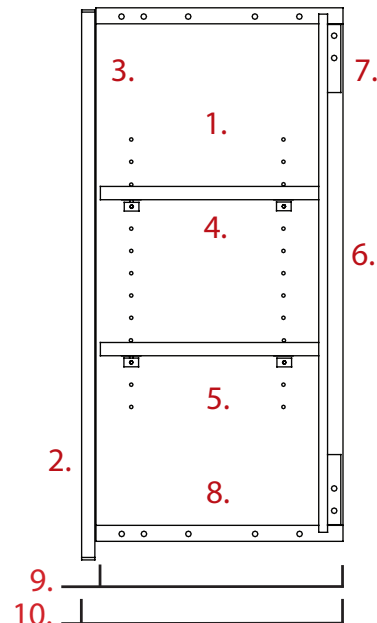


W: 24 - 48" (3" increments)
H: 18, 24, 30, 36, 42, 48"
D: 13"
Double Sliding Doors
1 Vertical Divider
Fixed Shelves*

*Shelf Quantities	
Cabinet Height	# of Shelves
12, 15"	0
18, 24"	1
30, 36"	2
42, 48"	3

Wall Cabinet Overview

1. Fully doweled 3/4" cabinet body with 0.5mm edge banding
2. 3/4" door with 1.4mm edge banding, projects 1" below cabinet
3. 6-point adjustable hinges, 120 & 170 degree available
4. 1" shelves, shelf supports with pins and fixed supports
5. Matching cabinet interior
6. Inset back, fully housed at top, bottom and sides
7. Mounting rails top & bottom
8. 1" cabinet top and bottom
9. 13" standard cabinet body depth
10. 14" cabinet depth with doors



Wall Cabinets

Model # HW2605



W: 24 - 36" (3" increments)
H: 12, 15, 18, 24, 30, 36, 42, 48"
D: 13"
Double Framed Glass Doors
Empty Interior

Model # HW2682



W: 24 - 36" (3" increments)
H: 18, 24, 30, 36, 42, 48"
D: 13"
Double Framed Glass Doors
Adjustable Shelves*

Model # HW2675



W: 24 - 36" (3" increments)
H: 18, 24, 30, 36, 42, 48"
D: 13"
Double Framed Glass Doors
Fixed Shelves*

Model # HW2615



W: 24 - 48" (3" increments)
H: 12, 15, 18, 24, 30, 36, 42, 48"
D: 13"
Double Framed Glass Doors
1 Vertical Divider

Model # HW2655



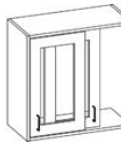
W: 24 - 48" (3" increments)
H: 18, 24, 30, 36, 42, 48"
D: 13"
Double Framed Glass Doors
1 Vertical Divider
Adjustable Shelves*

Model # HW2685



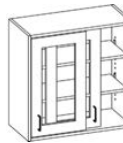
W: 24 - 48" (3" increments)
H: 18, 24, 30, 36, 42, 48"
D: 13"
Double Framed Glass Doors
1 Vertical Divider
Fixed Shelves*

Model # HW2705



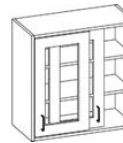
W: 24 - 36" (3" increments)
H: 12, 15, 18, 24, 30, 36, 42, 48"
D: 13"
Framed Sliding Glass Doors
Empty Interior

Model # HW2782



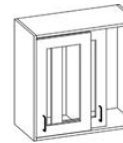
W: 24 - 36" (3" increments)
H: 18, 24, 30, 36, 42, 48"
D: 13"
Framed Sliding Glass Doors
Adjustable Shelves*

Model # HW2775



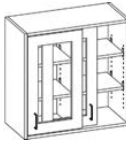
W: 24 - 36" (3" increments)
H: 18, 24, 30, 36, 42, 48"
D: 13"
Framed Sliding Glass Doors
Fixed Shelves*

Model # HW2715



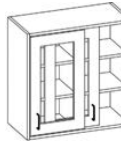
W: 24 - 48" (3" increments)
H: 12, 15, 18, 24, 30, 36, 42, 48"
D: 13"
Framed Sliding Glass Doors
1 Vertical Divider

Model # HW2755



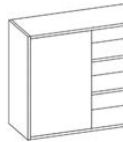
W: 24 - 46" (3" increments)
H: 18, 24, 30, 36, 42, 48"
D: 13"
Framed Sliding Glass Doors
1 Vertical Divider
Adjustable Shelves*

Model # HW2785



W: 24 - 48" (3" increments)
H: 18, 24, 30, 36, 42, 48"
D: 13"
Framed Sliding Glass Doors
1 Vertical Divider
Fixed Shelves*

Model # HW2500



W: 30 - 39" (3" increments)
H: 12, 15, 18, 24, 30, 36, 42, 48"
D: 13"
Blind Corner, Panel Left
Open
Adjustable Shelves*

Model # HW2501



W: 30 - 39" (3" increments)
H: 12, 15, 18, 24, 30, 36, 42, 48"
D: 13"
Blind Corner, Panel Right
Open
Adjustable Shelves*

Model # HW2510



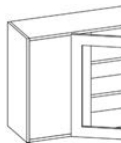
W: 30 - 39" (3" increments)
H: 18, 24, 30, 36, 42, 48"
D: 13"
Blind Corner, Panel Left
Full Door
Adjustable Shelves*

Model # HW2520



W: 30 - 39" (3" increments)
H: 18, 24, 30, 36, 42, 48"
D: 13"
Blind Corner, Panel Right
Full Door
Adjustable Shelves*

Model # HW2530



W: 30 - 39" (3" increments)
H: 18, 24, 30, 36, 42, 48"
D: 13"
Blind Corner, Panel Left
Full Glass Door
Adjustable Shelves*

Model # HW2531

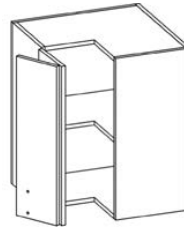


W: 30 - 39" (3" increments)
H: 18, 24, 30, 36, 42, 48"
D: 13"
Blind Corner, Panel Right
Full Glass Door
Adjustable Shelves*

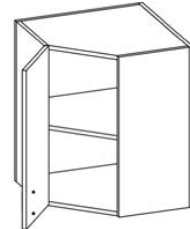
*Shelf Quantities	
Cabinet Height	# of Shelves
12, 15"	0
18, 24"	1
30, 36"	2
42, 48"	3

Each pane of glass in glass doors is a separate piece of 1/4" tempered glass.
Depths shown indicate casebody depth. Add 1" for doors and drawers.

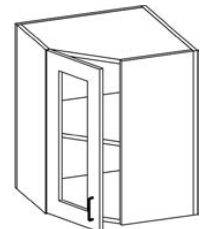
<i>Model #</i>	<i>Description</i>	<i>WxHxD</i>
HW2900	Open, Empty Interior (45° Corner)	24"x18,24,30,36,42,48"x24"
HW2901	Open, Adjustable Shelves*	24"x18,24,30,36,42,48"x24"
HW2902	Open, Rotating Shelves	24"x30,36"x24"
HW2905/2915	Door, Left/Right Hinged, Empty Interior	24"x18,24,30,36,42,48"x24"
HW2910/2920	Door, Left/Right Hinged, Adjustable Shelves*	24"x18,24,30,36,42,48"x24"
HW2911/2921	Door, Left/Right Hinged, Rotating Shelf	24"x30,36"x24"
HW2950/2960	Glass Door, Left/Right Hinged, Open Interior	24"x18,24,30,36,42,48"x24"
HW2951/2961	Glass Door, Left/Right Hinged, Adjustable Shelves*	24"x18,24,30,36,42,48"x24"
HW2952/2962	Glass Door, Left/Right Hinged, Rotating Shelf	24"x30,36"x24"
HW2970	Open Empty Interior (Square Inside Corner)	24"x18,24,30,36,42,48"x14"
HW2975/2976	Door, Left/Right Hinged, Adjustable Shelves*	24"x18,24,30,36,42,48"x14"



HW2975 shown



HW2910 shown



HW2951 shown



Northwoods Therapy, WI

Accessory Cabinets

Model # HW2400



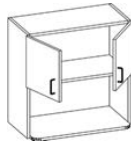
W: 24 - 36" (3" increments)
H: 30, 36, 42, 48"
D: 13" (18" Bottom)
Open
Microwave Opening Below
(14" High x 16.375" Deep)
Extended Bottom

Model # HW2401



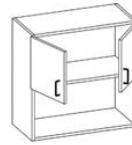
W: 24 - 36" (3" increments)
H: 30, 36, 42, 48"
D: 13"
Open
Microwave Opening Below
(14" High x 12.375" Deep)
Flush Bottom

Model # HW2430



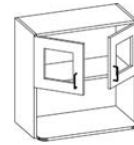
W: 24 - 36" (3" increments)
H: 30, 36, 42, 48"
D: 13" (18" Bottom)
Doors
Microwave Opening Below
(14" High x 16.375" Deep)
Extended Bottom

Model # HW2431



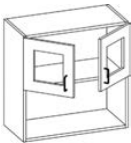
W: 24 - 36" (3" increments)
H: 30, 36, 42, 48"
D: 13"
Doors
Microwave Opening Below
(14" High x 12.375" Deep)
Flush Bottom

Model # HW2440



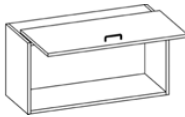
W: 24 - 36" (3" increments)
H: 30, 36, 42, 48"
D: 13" (18" Bottom)
Glass Doors
Microwave Opening Below
(14" High x 16.375" Deep)
Extended Bottom

Model # HW2441



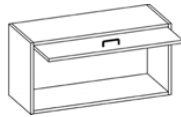
W: 24 - 36" (3" increments)
H: 30, 36, 42, 48"
D: 13"
Glass Doors
Microwave Opening Below
(14" High x 12.375" Deep)
Flush Bottom

Model # HW2990



W: 24 - 36" (3" increments)
H: 12, 15, 18"
D: 13"
Flipper Door
Overlay Door Opening

Model # HW2991



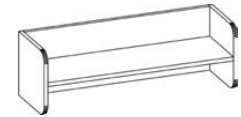
W: 24 - 36" (3" increments)
H: 12, 15, 18"
D: 13"
Flipper Door
Inset Door Opening

Model # HW3100



W: 24, 30, 36, 42, 48"
H: 12"
D: 12"
Wall Shelf
Fixed Clothes Rod

Model # HW3101



W: 24, 30, 36, 42, 48"
H: 12"
D: 12"
Wall Shelf

We Can. DESIGN. BUILD. DELIVER.

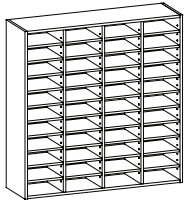
WB Manufacturing can design, build and deliver all your healthcare casework needs. With in-house design, estimating, customer service and construction, **We Can.** provide budget minded solutions with quick turn around. Contact us today.



Depths shown indicate casebody depth. Add 1" for doors and drawers.

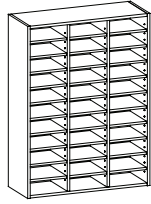
Mail Slots

Model # HMSL2552



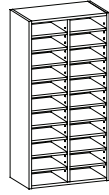
W: 47-1/4"
H: 48"
D: 13"
44 Removable Shelves,
3 Vertical Dividers

Model # HMSL2551



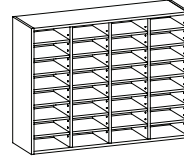
W: 35-5/8"
H: 48"
D: 13"
33 Removable Shelves,
2 Vertical Dividers

Model # HMSL2550



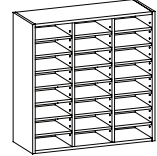
W: 24"
H: 48"
D: 13"
22 Removable Shelves,
1 Vertical Divider

Model # HMSL2555



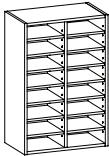
W: 47-1/4"
H: 36"
D: 13"
28 Removable Shelves,
3 Vertical Dividers

Model # HMSL2554



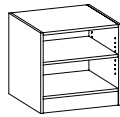
W: 35-5/8"
H: 36"
D: 13"
21 Removable Shelves,
2 Vertical Dividers

Model # HMSL2553



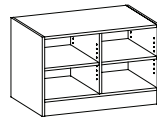
W: 24"
H: 36"
D: 13"
14 Removable Shelves,
1 Vertical Divider

Model # HMSB2556



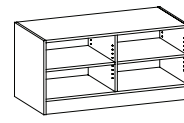
W: 24"
H: 23"
D: 23"
1 Removable Shelf

Model # HMSB2557



W: 35-5/8"
H: 23"
D: 23"
2 Removable Shelves,
1 Vertical Divider

Model # HMSB2558



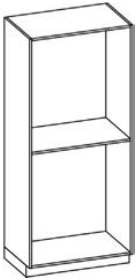
W: 47-1/4"
H: 23"
D: 23"
2 Removable Shelves,
1 Vertical Divider



Luther Middleford, WI

Tall Cabinets

Model # HT3130



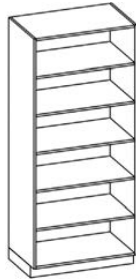
W: 12 - 48" (3" increments)
H: 48, 60, 72 or 84"
D: 13 or 23"
Open
1 Center Fixed Shelf

Model # HT1250



W: 12 - 48" (3" increments)
H: 48, 60, 72 or 84"
D: 13 or 23"
Open, 1 Center Fixed Shelf
Adjustable Shelves
- 2 at 48" & 60" Tall
- 3 at 72" Tall
- 4 at 84" Tall

Model # HT1260



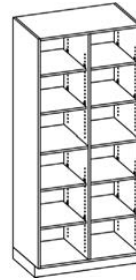
W: 12 - 48" (3" increments)
H: 48, 60, 72 or 84"
D: 13 or 23"
Open, Fixed Shelves
- 3 at 48" & 60" Tall
- 4 at 72" Tall
- 5 at 84" Tall

Model # HT3131



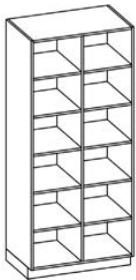
W: 18 - 48" (3" increments)
H: 48, 60, 72 or 84"
D: 13 or 23"
Open
1 Vertical Divider
2 Center Fixed Shelves

Model # HT1255



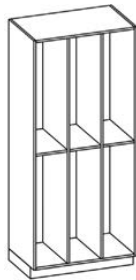
W: 18 - 48" (3" increments)
H: 48, 60, 72 or 84"
D: 13 or 23"
Open, 1 Vertical Divider
2 Fixed Shelves
Adjustable Shelves
- 4 at 48" & 60" Tall
- 6 at 72" Tall
- 8 at 84" Tall

Model # HT1265



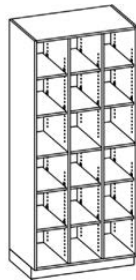
W: 18 - 48" (3" increments)
H: 48, 60, 72 or 84"
D: 13 or 23"
Open, 1 Vertical Divider
Fixed Shelves
- 6 at 48" & 60" Tall
- 8 at 72" Tall
- 10 at 84" Tall

Model # HT3132



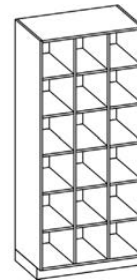
W: 24 - 48" (3" increments)
H: 48, 60, 72 or 84"
D: 13 or 23"
Open
2 Vertical Dividers
3 Fixed Shelves

Model # HT1251



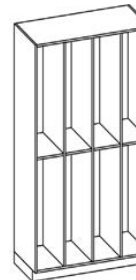
W: 24 - 48" (3" increments)
H: 48, 60, 72 or 84"
D: 13 or 23"
Open, 2 Vertical Dividers
3 Fixed Shelves
Adjustable Shelves
- 6 at 48" & 60" Tall
- 9 at 72" Tall
- 12 at 84" Tall

Model # HT1261



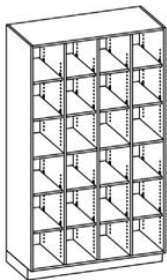
W: 24 - 48" (3" increments)
H: 48, 60, 72 or 84"
D: 13 or 23"
Open, 2 Vertical Dividers
Fixed Shelves
- 9 at 48" & 60" Tall
- 12 at 72" Tall
- 15 at 84" Tall

Model # HT3133



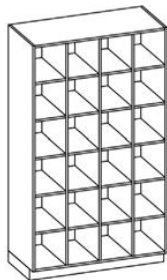
W: 24 - 48" (3" increments)
H: 48, 60, 72 or 84"
D: 13 or 23"
Open
3 Vertical Dividers
4 Fixed Shelves

Model # HT1252



W: 24 - 48" (3" increments)
H: 48, 60, 72 or 84"
D: 13 or 23"
Open, 3 Vertical Dividers
4 Fixed Shelves
Adjustable Shelves
- 8 at 48" & 60" Tall
- 12 at 72" Tall
- 16 at 84" Tall

Model # HT1262



W: 24 - 48" (3" increments)
H: 48, 60, 72 or 84"
D: 13 or 23"
Open, 3 Vertical Dividers
Fixed Shelves
- 12 at 48" & 60" Tall
- 16 at 72" Tall
- 20 at 84" Tall

Depths shown indicate casebody depth. Add 1" for doors and drawers.



Mayo Clinic - Red Cedar, WI

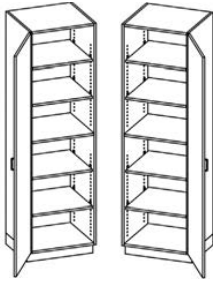
Tall Cabinets

Model # HT3200/3201



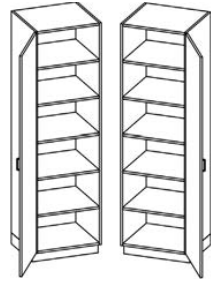
W: 12 - 24" (3" increments)
H: 48, 60, 72 or 84"
D: 23"
Single Door
Left/Right Hinged
1 Fixed Shelf

Model # HT3210/3220



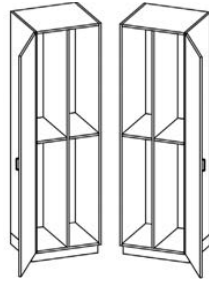
W: 12 - 24" (3" increments)
H: 48, 60, 72 or 84"
D: 23"
Single Door, Left/Right Hinged
1 Fixed Shelf
Adjustable Shelves
- 2 at 48" & 60" Tall
- 3 at 72" Tall
- 4 at 84" Tall

Model # HT3250/3260



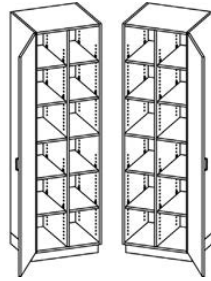
W: 12 - 24" (3" increments)
H: 48, 60, 72 or 84"
D: 23"
Single Door, Left/Right Hinged
Fixed Shelves
- 3 at 48" & 60" Tall
- 4 at 72" Tall
- 5 at 84" Tall

Model # HT3205/3206



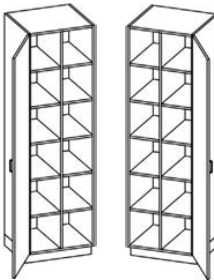
W: 18 - 24" (3" increments)
H: 48, 60, 72 or 84"
D: 23"
Single Door
Left/Right Hinged
1 Vertical Divider
2 Fixed Shelves

Model # HT3225/3235



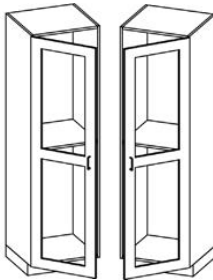
W: 18 - 24" (3" increments)
H: 48, 60, 72 or 84" D: 23"
Single Door, Left/Right Hinged
1 Vertical Divider
2 Fixed Shelves
Adjustable Shelves
- 4 at 48" & 60" Tall
- 6 at 72" Tall
- 8 at 84" Tall

Model # HT3265/3275



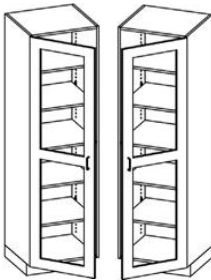
W: 18 - 24" (3" increments)
H: 48, 60, 72 or 84"
D: 23"
Single Door, Left/Right Hinged
1 Vertical Divider
Fixed Shelves
- 6 at 48" & 60" Tall
- 8 at 72" Tall
- 10 at 84" Tall

Model # HT3500/3501



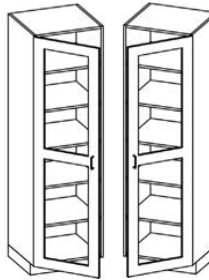
W: 12 - 24" (3" increments)
H: 48, 60, 72 or 84"
D: 23"
Single Split Glass Door
Left/Right Hinged
1 Fixed Shelf

Model # HT3510/3520



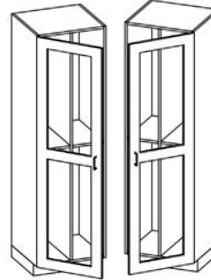
W: 12 - 24" (3" increments)
H: 48, 60, 72 or 84" D: 23"
Single Split Glass Door
Left/Right Hinged
1 Fixed Shelf
Adjustable Shelves
- 2 at 48" & 60" Tall
- 3 at 72" Tall
- 4 at 84" Tall

Model # HT3530/3540



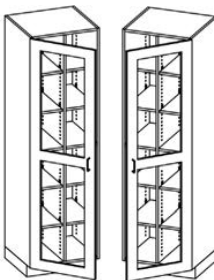
W: 12 - 24" (3" increments)
H: 48, 60, 72 or 84"
D: 23"
Single Split Glass Door
Left/Right Hinged
Fixed Shelves
- 3 at 48" & 60" Tall
- 4 at 72" Tall
- 5 at 84" Tall

Model # HT3550/3560



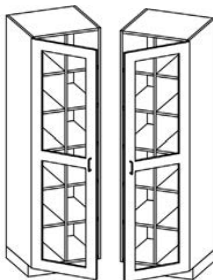
W: 18 - 24" (3" increments)
H: 48, 60, 72 or 84"
D: 23"
Single Split Glass Door
Left/Right Hinged
1 Vertical Divider
2 Fixed Shelves

Model # HT3570/3575



W: 18 - 24" (3" increments)
H: 48, 60, 72 or 84" D: 23"
Single Split Glass Door Left/Right Hinged, 1 Vertical Divider
2 Fixed Shelves
Adjustable Shelves
- 4 at 48" & 60" Tall
- 6 at 72" Tall
- 8 at 84" Tall

Model # HT3580/3585



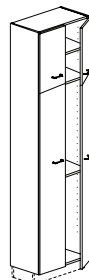
W: 18 - 24" (3" increments)
H: 48, 60, 72 or 84" D: 23"
Single Split Glass Door
Left/Right Hinged
1 Vertical Divider
Fixed Shelves
- 6 at 48" & 60" Tall
- 8 at 72" Tall
- 10 at 84" Tall

Contact Customer Service



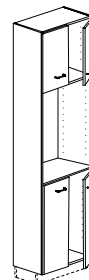
W: 24"
H: 91"
D: 13"
Scope Cabinet

Contact Customer Service



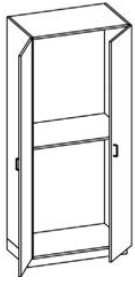
W: 24"
H: 89"
D: 13"
2 Compartment
Split Double Doors
2 Adjustable Shelves

Contact Customer Service



W: 24"
H: 89"
D: 13"
Open Storage with Split Double Doors Above and Below
4 Adjustable Shelves

Model # HT3100



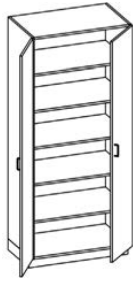
W: 24 - 48" (3" increments)
H: 48, 60, 72 or 84"
D: 23"
Double Doors
1 Fixed Shelf

Model # HT3232/3410



W: 24 - 36" (3" increments)
H: 48, 60, 72 or 84" D: 23"
Double Doors
1 Fixed Shelf
Adjustable Shelves
- 2 at 48" & 60" Tall
- 3 at 72" Tall
- 4 at 84" Tall
Note: T3410 has sliding doors

Model # HT3135



W: 24 - 48" (3" increments)
H: 48, 60, 72 or 84"
D: 23"
Double Doors
Fixed Shelves
- 3 at 48" & 60" Tall
- 4 at 72" Tall
- 5 at 84" Tall

Model # HT3105



W: 24 - 48" (3" increments)
H: 48, 60, 72 or 84"
D: 23"
Double Doors
1 Vertical Divider
2 Fixed Shelves

Model # HT3222/3411



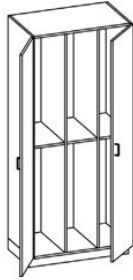
W: 24 - 48" (3" increments)
H: 48, 60, 72 or 84" D: 23"
Double Doors
1 Vertical Divider, 2 Fixed Shelves
Adjustable Shelves
- 4 at 48" & 60" Tall
- 6 at 72" Tall
- 8 at 84" Tall
Note: T3411 has sliding doors

Model # HT3140



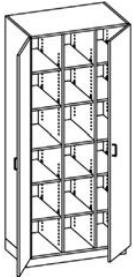
W: 24 - 48" (3" increments)
H: 48, 60, 72 or 84"
D: 23"
*Double Doors
1 Vertical Divider
Fixed Shelves
- 6 at 48" & 60" Tall
- 8 at 72" Tall
- 10 at 84" Tall

Model # HT3110



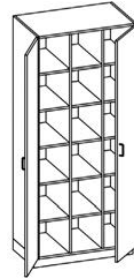
W: 24 - 48" (3" increments)
H: 48, 60, 72 or 84"
D: 23"
Double Doors
2 Vertical Dividers

Model # HT3165



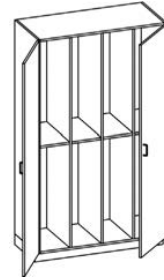
W: 24 - 48" (3" increments)
H: 48, 60, 72 or 84" D: 23"
Double Doors
2 Vertical Dividers
3 Fixed Shelves
Adjustable Shelves
- 6 at 48" & 60" Tall
- 9 at 72" Tall
- 12 at 84" Tall

Model # HT3150



W: 24 - 48" (3" increments)
H: 48, 60, 72 or 84"
D: 23"
Double Doors
2 Vertical Dividers
Fixed Shelves
- 9 at 48" & 60" Tall
- 12 at 72" Tall
- 15 at 84" Tall

Model # HT3170



W: 24 - 48" (3" increments)
H: 48, 60, 72 or 84"
D: 23"
Double Doors
3 Vertical Dividers
4 Fixed Shelves

Contact Customer Service

Model # HT3180



W: 24 - 48" (3" increments)
H: 48, 60, 72 or 84" D: 23"
Double Doors
3 Vertical Dividers
4 Fixed Shelves
Adjustable Shelves
- 8 at 48" & 60" Tall
- 12 at 72" Tall
- 16 at 84" Tall

Model # HT3175



W: 24 - 48" (3" increments)
H: 48, 60, 72 or 84"
D: 23"
Double Doors
3 Vertical Dividers
Fixed Shelves
- 12 at 48" & 60" Tall
- 16 at 72" Tall
- 20 at 84" Tall

Model # HT3600



W: 24 - 48" (3" increments)
H: 48, 60, 72 or 84"
D: 23"
Double Glass Doors
1 Fixed Shelf

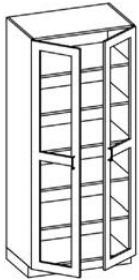
Model # HT3622



W: 24 - 48" (3" increments)
H: 48, 60, 72 or 84"
D: 23"
Double Glass Doors
1 Fixed Shelf
Adjustable Shelves
- 2 at 48" & 60" Tall
- 3 at 72" Tall
- 4 at 84" Tall

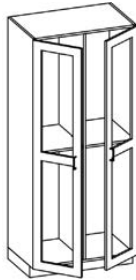
Tall Cabinets

Model # HT3630



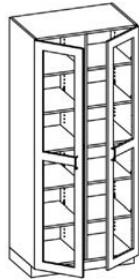
W: 24 - 48" (3" increments)
H: 48, 60, 72 or 84"
D: 23"
Double Glass Doors
Fixed Shelves
- 3 at 48" & 60" Tall
- 4 at 72" Tall
- 8 at 84" Tall

Model # HT3605



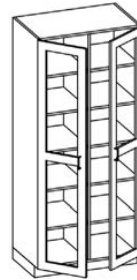
W: 24 - 48" (3" increments)
H: 48, 60, 72 or 84"
D: 23"
Double Glass Doors
1 Vertical Divider
2 Fixed Shelves

Model # HT3655



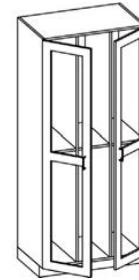
W: 24 - 48" (3" increments)
H: 48, 60, 72 or 84" D: 23"
Double Glass Doors
1 Vertical Divider
2 Fixed Shelves
Adjustable Shelves
- 4 at 48" & 60" Tall
- 6 at 72" Tall
- 8 at 84" Tall

Model # HT3640



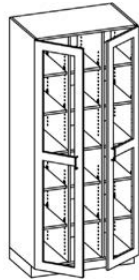
W: 24 - 48" (3" increments)
H: 48, 60, 72 or 84"
D: 23"
Double Glass Doors
1 Vertical Divider
Fixed Shelves
- 6 at 48" & 60" Tall
- 8 at 72" Tall
- 10 at 84" Tall

Model # HT3610



W: 24 - 48" (3" increments)
H: 48, 60, 72 or 84"
D: 23"
Double Glass Doors
2 Vertical Dividers

Model # HT3665



W: 24 - 48" (3" increments)
H: 48, 60, 72 or 84" D: 23"
Double Glass Doors
2 Vertical Dividers
3 Fixed Shelves
Adjustable Shelves
- 6 at 48" & 60" Tall
- 9 at 72" Tall
- 12 at 84" Tall

Model # HT3650



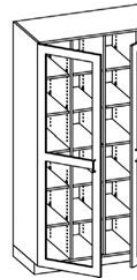
W: 24 - 48" (3" increments)
H: 48, 60, 72 or 84"
D: 23"
Double Glass Doors
2 Vertical Dividers
Fixed Shelves
- 9 at 48" & 60" Tall
- 12 at 72" Tall
- 15 at 84" Tall

Model # HT3680



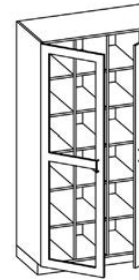
W: 24 - 48" (3" increments)
H: 48, 60, 72 or 84"
D: 23"
Double Glass Doors
3 Vertical Dividers
4 Fixed Shelves

Model # HT3690



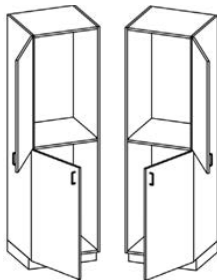
W: 24 - 48" (3" increments)
H: 48, 60, 72 or 84" D: 23"
Double Glass Doors
3 Vertical Dividers
4 Fixed Shelves
Adjustable Shelves
- 8 at 48" & 60" Tall
- 12 at 72" Tall
- 16 at 84" Tall

Model # HT3685



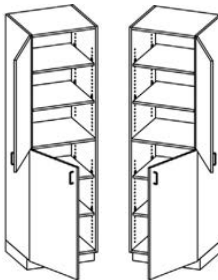
W: 24 - 48" (3" increments)
H: 48, 60, 72 or 84"
D: 23"
Double Glass Doors
3 Vertical Dividers
Fixed Shelves
- 12 at 48" & 60" Tall
- 16 at 72" Tall
- 20 at 84" Tall

Model # HT5500/5505



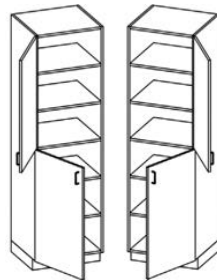
W: 12 - 24" (3" increments)
H: 48, 60, 72 or 84"
D: 23"
Split Doors
Left/Right Hinged
1 Fixed Shelf

Model # HT5510/5520



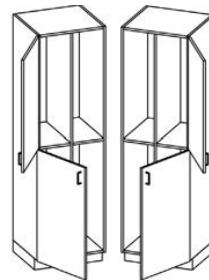
W: 12 - 24" (3" increments)
H: 48, 60, 72 or 84" D: 23"
Split Doors
Left/Right Hinged
1 Fixed Shelf
Adjustable Shelves
- 2 at 48" & 60" Tall
- 3 at 72" Tall
- 4 at 84" Tall

Model # HT5530/5540



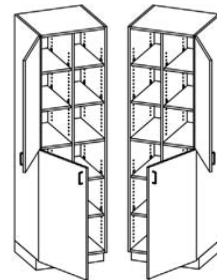
W: 12 - 24" (3" increments)
H: 48, 60, 72 or 84" D: 23"
Split Doors
Left/Right Hinged
Fixed Shelves
- 3 at 48" & 60" Tall
- 4 at 72" Tall
- 5 at 84" Tall

Model # HT5501/5506



W: 18 - 24" (3" increments)
H: 48, 60, 72 or 84"
D: 23"
Split Doors
Left/Right Hinged
2 Fixed Shelves

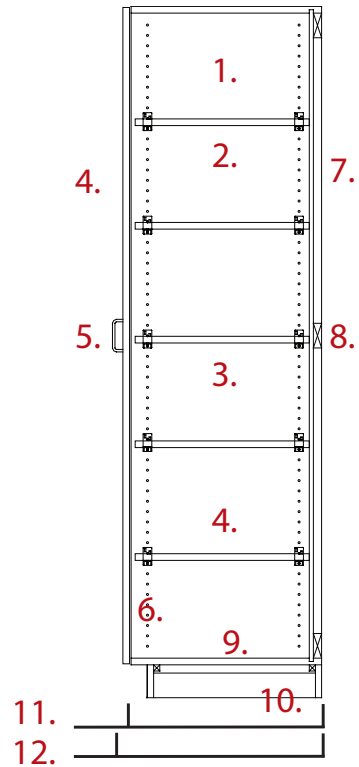
Model # HT5511/5521



W: 18 - 24" (3" increments)
H: 48, 60, 72 or 84" D: 23"
Split Doors, Left/Right Hinged
1 Vertical Divider
2 Fixed Shelves
Adjustable Shelves
- 4 at 48" & 60" Tall
- 6 at 72" Tall
- 8 at 84" Tall

Tall Cabinet Overview

1. Fully doweled 3/4" cabinet body with 0.5mm edge banding
2. 1" shelves, shelf supports with pins and fixed supports
3. Matching cabinet interior
4. 3/4" door with 1.4mm edge banding
5. Standard wire pulls
6. 6-point adjustable hinge, 120 & 170 degree available
7. Inset back, fully housed at top, bottom and sides
8. Mounting rails top, middle & bottom
9. 3/4" cabinet bottom
10. 3/4" exterior grade plywood ladder or applied base
11. 23" standard cabinet body depth
12. 24" cabinet depth with doors/drawers



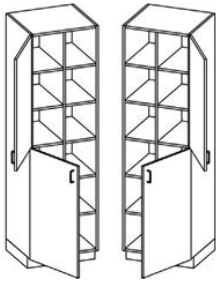
Each pane of glass in glass doors is a separate piece of 1/4" tempered glass.
 Depths shown indicate casebody depth. Add 1" for doors and drawers.



Glaser Dental, WI

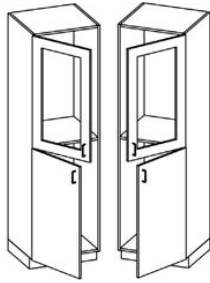
Tall Cabinets

Model # HT5531/5541



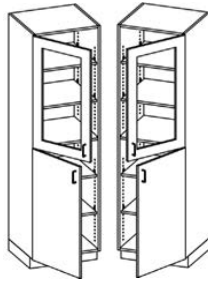
W: 18 - 24" (3" increments)
H: 48, 60, 72 or 84" D: 23"
Split Doors
Left/Right Hinged
1 Vertical Divider
Fixed Shelves
- 6 at 48" & 60" Tall
- 8 at 72" Tall
- 10 at 84" Tall

Model # HT5700/5705



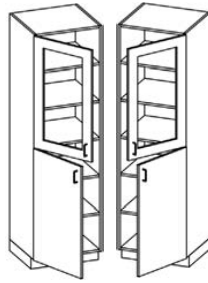
W: 12 - 24" (3" increments)
H: 48, 60, 72 or 84"
D: 23"
Split Doors
Glass Top Door
Solid Bottom Door
Left/Right Hinged
1 Fixed Shelf

Model # HT5710/5720



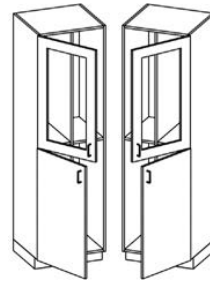
W: 12 - 24" (3" increments)
H: 48, 60, 72 or 84" D: 23"
Split Doors, Glass Top Door
Solid Bottom Door, Left/Right Hinged, 1 Fixed Shelf
Adjustable Shelves
- 2 at 48" & 60" Tall
- 3 at 72" Tall
- 4 at 84" Tall

Model # HT5730/5740



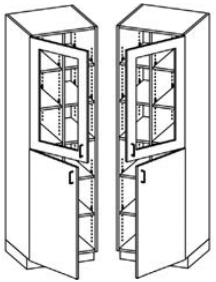
W: 12 - 24" (3" increments)
H: 48, 60, 72 or 84" D: 23"
Split Doors, Glass Top Door
Solid Bottom Door
Left/Right Hinged
Fixed Shelves
3 at 48" & 60" Tall
4 at 72" Tall
5 at 84" Tall

Model # HT5701/5706



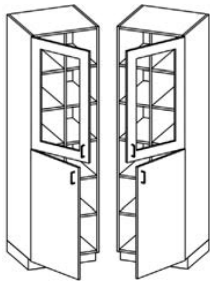
W: 12 - 24" (3" increments)
H: 48, 60, 72 or 84"
D: 23"
Split Doors
Glass Top Door
Solid Bottom Door
Left/Right Hinged
1 Vertical Divider
2 Fixed Shelves

Model # HT5711/5721



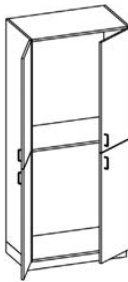
W: 18 - 24" (3" increments)
H: 48, 60, 72 or 84" D: 23"
Split Doors, Glass Top Door
Solid Bottom Door, Left/Right Hinged, 1 Vertical Divider, 2 Fixed Shelves, Adjustable Shelves
- 4 at 48" & 60" Tall
- 6 at 72" Tall
- 8 at 84" Tall

Model # HT5731/5741



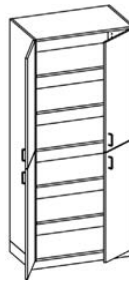
W: 18 - 24" (3" increments)
H: 48, 60, 72 or 84" D: 23"
Split Doors, Glass Top Door
Solid Bottom Door
Left/Right Hinged
Fixed Shelves
- 3 at 48" & 60" Tall
- 4 at 72" Tall
- 5 at 84" Tall

Model # HT5600



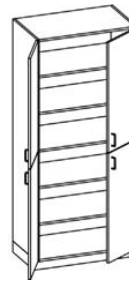
W: 24 - 48" (3" increments)
H: 48, 60, 72 or 84"
D: 23"
Split Double Doors
1 Fixed Shelf

Model # HT5622



W: 24 - 48" (3" increments)
H: 48, 60, 72 or 84"
D: 23"
Split Double Doors
1 Fixed Shelf
Adjustable Shelves
- 2 at 48" & 60" Tall
- 3 at 72" Tall
- 4 at 84" Tall

Model # HT5601



W: 24 - 48" (3" increments)
H: 48, 60, 72 or 84"
D: 23"
Split Double Doors
- 1 Fixed Shelf
- 2 at 48" & 60" Tall
- 3 at 72" Tall
- 4 at 84" Tall

Model # HT5605



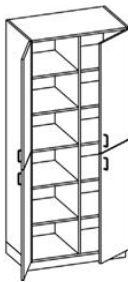
W: 24 - 48" (3" increments)
H: 48, 60, 72 or 84"
D: 23"
Split Double Doors
1 Vertical Divider
2 Fixed Shelves

Model # HT5623



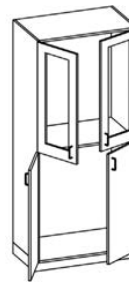
W: 24 - 48" (3" increments)
H: 48, 60, 72 or 84" D: 23"
Split Double Doors
1 Vertical Divider
2 Fixed Shelves
Adjustable Shelves
- 4 at 48" & 60" Tall
- 6 at 72" Tall
- 8 at 84" Tall

Model # HT5606



W: 24 - 48" (3" increments)
H: 48, 60, 72 or 84"
D: 23"
Split Double Doors
1 Vertical Divider
Fixed Shelves
- 6 at 48" & 60" Tall
- 8 at 72" Tall
- 10 at 84" Tall

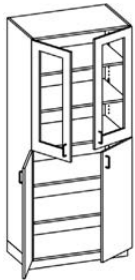
Model # HT5630



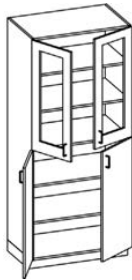
W: 24 - 48" (3" increments)
H: 48, 60, 72 or 84"
D: 23"
Split Double Doors
Glass Top Doors
Solid Bottom Doors
1 Fixed Shelf
1/4" Tempered Glass

Depths shown indicate casebody depth. Add 1" for doors and drawers. Each pane of glass in glass doors is a separate piece of 1/4" tempered glass.

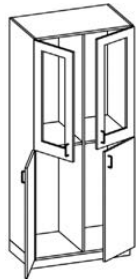
Model # HT5652



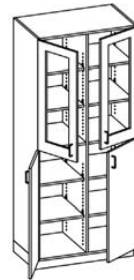
Model # HT5631



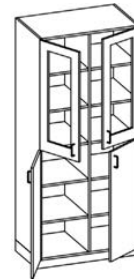
Model # HT5635



Model # HT5653



Model # HT5656



W: 24 - 48" (3" increments)
H: 48, 60, 72 or 84" D: 23"
Split Double Doors, Glass Top
Doors, Solid Bottom Doors
1 Fixed Shelf
Adjustable Shelves
- 2 at 48" & 60" Tall
- 3 at 72" Tall
- 4 at 84" Tall

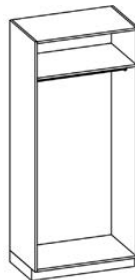
W: 24 - 48" (3" increments)
H: 48, 60, 72 or 84" D: 23"
Split Double Doors
Glass Top Doors
Solid Bottom Doors
Fixed Shelves
- 3 at 48" & 60" Tall
- 4 at 72" Tall
- 5 at 84" Tall

W: 24 - 48" (3" increments)
H: 48, 60, 72 or 84"
D: 23"
Split Double Doors
Glass Top Doors
Solid Bottom Doors
- 1 Vertical Divider
- 2 Fixed Shelves

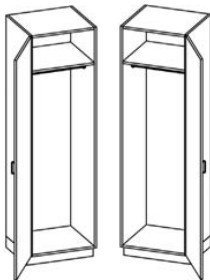
W: 24 - 48" (3" increments)
H: 48, 60, 72 or 84" D: 23"
Split Double Doors, Glass Top
Doors, Solid Bottom Doors
1 Vertical Divider, 2 Fixed Shelves
Adjustable Shelves
- 4 at 48" & 60" Tall
- 6 at 72" Tall
- 8 at 84" Tall

W: 24 - 48" (3" increments)
H: 48, 60, 72 or 84" D: 23"
Split Double Doors, Glass Top
Doors, Solid Bottom Doors
1 Vertical Divider
Fixed Shelves
- 6 at 48" & 60" Tall
- 8 at 72" Tall
- 10 at 84" Tall

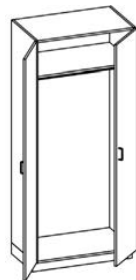
Model # HT4100



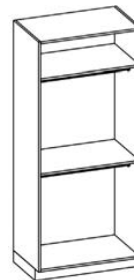
Model # HT4110/4120



Model # HT4122



Model # HT4105



Model # HT4127



W: 12 - 48" (3" Increments)
H: 60, 72 or 84"
D: 23"
Open Wardrobe
1 Fixed Shelf
1 Clothes Rod

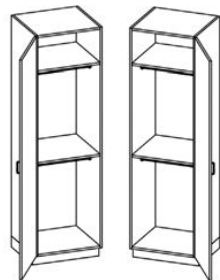
W: 12 - 24" (3" Increments)
H: 60, 72 or 84"
D: 23"
Single Door Wardrobe
Left/Right Hinged
1 Fixed Shelf
1 Clothes Rod

W: 24 - 48" (3" increments)
H: 60, 72 or 84"
D: 23"
Double Door Wardrobe
1 Fixed Shelf
1 Clothes Rod

W: 12 - 48" (3" Increments)
H: 60, 72 or 84"
D: 23"
Open Wardrobe
2 Fixed Shelves
2 Clothes Rods

W: 24 - 48" (3" increments)
H: 60, 72 or 84"
D: 23"
Double Door Wardrobe
2 Fixed Shelves
2 Clothes Rods

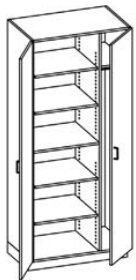
Model # HT4115/4125



Model # HT4222



Model # HT4224



Model # HT4324



Model # HT4322



W: 12 - 24" (3" Increments)
H: 60, 72 or 84"
D: 23"
Single Door Wardrobe
Left/Right Hinged
2 Fixed Shelves
2 Clothes Rods

W: 36 - 48" (3" Increments)
H: 72 or 84"
D: 23"
Teacher Wardrobe
1 Vertical Divider, Fixed Shelf,
Coat Rod Left -10" clear
Adjustable Shelves Right
- 4 at 72" Tall
- 5 at 84" Tall
Mirror On Back Of One Door

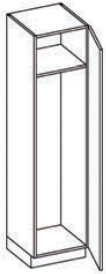
W: 36 - 48" (3" Increments)
H: 72 or 84"
D: 23"
Teacher Wardrobe
1 Vertical Divider, Fixed Shelf,
Coat Rod Right -10" clear
Adjustable Shelves Left
- 4 at 72" Tall
- 5 at 84" Tall
Mirror On Back Of One Door

W: 36 - 48" (3" Increments)
H: 72 or 84" D: 23"
Teacher Wardrobe
1 Vertical Divider Fixed Shelf,
Coat Rod Left -10" clear
2 File Drawers Right
Adjustable Shelves Right
- 2 at 72" Tall
- 3 at 84" Tall
2 File Drawers
Mirror On Back Of One Door

W: 36 - 48" (3" Increments)
H: 72 or 84" D: 23"
Teacher Wardrobe
1 Vertical Divider, Fixed Shelf,
Coat Rod Right -10" clear
2 File Drawers Left
Adjustable Shelves Left
- 2 at 72" Tall
- 3 at 84" Tall
2 File Drawers
Mirror On Back Of One Door

Lockers

Model #
H1T - 1 Tier



W: 12, 15, 18, 21, 24"
H: 48, 60, 72, 84"
D: 12, 15, 18, 21, 24"
1 Compartment
with: Shelf, Door,
Right European
Hinge, 2 Coat Hooks

Model #
H2T - 2 Tier



W: 12, 15, 18, 21, 24"
H: 48, 60, 72, 84"
D: 12, 15, 18, 21, 24"
2 Compartments
each with: Door,
Right European
Hinge, 2 Coat Hooks

Model #
H3T - 3 Tier



W: 12, 15, 18, 21, 24"
H: 48, 60, 72, 84"
D: 12, 15, 18, 21, 24"
3 Compartments
each with:
Door, Right European
Hinge, 2 Coat Hooks

Model #
H4T - 4 Tier



W: 12, 15, 18, 21, 24"
H: 48, 60, 72, 84"
D: 12, 15, 18, 21, 24"
4 Compartments
each with: Door,
Right European
Hinge

Model #
H5T - 5 Tier



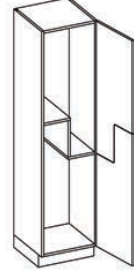
W: 12, 15, 18, 21, 24"
H: 48, 60, 72, 84"
D: 12, 15, 18, 21, 24"
5 Compartments
each with: Door,
Right European
Hinge

Model #
H6T - 6 Tier



W: 12, 15, 18, 21, 24"
H: 48, 60, 72, 84"
D: 12, 15, 18, 21, 24"
6 Compartments
each with: Door,
Right European
Hinge

Model #
H2DZL - Double Z



W: 12, 15, 18, 21, 24"
H: 48, 60, 72, 84"
D: 12, 15, 18, 21, 24"
2 Compartments
each with: Door,
Right European
Hinge 2 Coat Hooks
(Available in laminate
doors only)

Depths shown indicate casebody depth. Add 1" for doors and drawers.



Nurse Lockers, FL

Casework Accessories

HB0001  W: as needed H: as needed D: 3/4" Base Scribe/Filler	HW0001  W: as needed H: as needed D: as needed Wall Scribe / Filler Field Assembly Required	HT0001  W: as needed H: as needed D: 3/4" Tall Scribe/Filler	HB0005  W: as needed H: as needed D: as needed Base Corner Filler Field Assembly Required	HW0005  W: as needed H: as needed D: as needed Wall Corner Filler Field Assembly Required	HT0005  W: as needed H: as needed D: as needed Tall Corner Filler Field Assembly Required	HB0010  W: 3 - 48 (3" increments) H: 4-1/2, 6.1/8" D: 3/4" Apron Panel	HB0015  W: 12 - 48" (3" increments) H: 25, 29, 33, 35" D: 3/4" Knee space Panel
HB0020  W: 12 - 48" (3" increments) H: 25, 29, 33, 35" D: 3/4" Finished Back Panel Edged all four sides	HB0100/B0101  W: 3/4" H: 25, 29, 33, 35" D: 22, 28" Pedestal Support HB0100 shown, HB0101 has no notch	HB0110/B0111  W: 3/4" H: 25, 29, 33, 35" D: 22, 28" Angled Pedestal Support HB0110 shown, HB0111 has no notch	HB0120/B0121  W: 3/4" H: 25, 29, 33, 35" D: 22, 28" Angled Pedestal Support HB0120 shown, HB0121 has no notch	A0001  Sizes (reversible): 5x8, 8x12, 12x18, 15x21, 18x24, 24x24, 24x29" Countertop Support Bracket Metal Angle Black, White, Almond, Prime	A0002  W: 3" H: 12 3/4" D: 6" Countertop Support Bracket Silver Matte Anodized Finish	A0010  W: 2" H and D: 12x12" - 28x28" (2" Increments Size Matched) Heavy Duty Steel Countertop Support Bracket Black or White	HB0200  W: 3" H and D: 12x12" - 28x28" (2" Increments Size Matched) Laminate Countertop Support Bracket
A0003  W: 16-3/4" H: 5" D: 14-1/2" Standard Keyboard Tray Height & Tilt Adjustable 360 Degree Swivel Black Injected Molded	A0004  W: 26-3/4" H: 3-1/4" D: 16-1/2" Standard Keyboard Tray Black Injected Molded Ball Bearing Slides Sloped Front Edge	A0005  W: 23-1/4" H: 1-3/4" D: 18-1/4" (extends to 29") Pencil Drawer Ball Bearing Slides 5 Compartments Black Molded Plastic	HB0300  W: as needed H: 4" Back (3" front) D: 3" Laminate Cable Tray	HA0006  W: as needed H: 3-1/4" D: 1" Cable Tray Black Molded Plastic	A0007  W: 2-3/8", 3-1/8" Diameter H: 28 - 29" (adjustable) Tube Steel Table Leg Black, White, Almond, Bright Chrome	HW0010  W: 12 - 96" (3" increments) H: 2-1/2, 4" D 3/4" Under Cabinet Light Valance	HW0007  W: 12 - 96" (3" increments) H: 3, 6, 9, 12" D: 3/4" Soffit Panel Ceiling Scribe
HW0020  W: 12 - 96" (3" increments) H: 11-3/4" D: 14" Sloped Top 1-3/4" Front Face	Pulls  Wire Pull	Inset Handle  Inset Handle	Knob Pulls  Knob Pulls	Locks  Key Captive Dead bolt Digital Combo	Coat Hooks  Cam Padlock Hasp/ Cam Padlock Hasp w/Pull	Single Prong  Single Prong	Number Plates  Rectangle Plate Round Plate

Additional accessories available. Contact customer service for details.



WB Manufacturing Limited Lifetime Warranty

Wisconsin Bench Manufacturing promises to repair or replace any WB Manufacturing brand product or component that is defective in material or workmanship for as long as the original purchaser owns it. This is the sole and exclusive remedy. This warranty is subject to limitations, exclusions or other provisions detailed below effective from the date of substantial completion.

Limited Lifetime Warranty - Casework

Subject to the limitations set forth below, WB Manufacturing expressly warrants that our products are reasonably free of defects in material and workmanship, and when properly handled and installed will conform, within accepted tolerances, to applicable manufacturing specifications. This warranty shall extend to the original buyer from the date of shipment. This warranty does not cover normal wear and tear or damage resulting from improper installation, accident, misuse, alteration, abuse or lack of reasonable care.

Due to the variety of applications where this product may be used, the warranty set forth above is exclusive and in lieu of all other warranties, express or implied, in fact or by operation of law or otherwise, or arising by course of dealing or performance, custom or usage in the trade, including without limitation, the implied warranties of fitness for a particular purpose merchantability, and WB Manufacturing shall have no obligation or liability to any person or entity in connection with or arising from the furnishing, sale, installation or repair, use or subsequent sale of any product supplied by it.

The buyer's sole and exclusive remedy for any noncompliance with the express warranty set forth above shall be limited to repair or replacement of the defective product, or in the event that repair or replacement is not feasible, return of the product and refund of the purchase price. Freight and installation costs are not included.

Under no circumstances shall the manufacturer be liable in excess of the purchase price of this product, in either tort or contract or otherwise, for any loss, damage or injury in connection with arising from the purchase, use or inability to use this product, or for any special, indirect, collateral, incidental, consequential or exemplary damages such as, but not limited to, loss of anticipated profits or economic loss.

Retaining all documentation will significantly expedite claim resolution.



Focus is to Exceed in Green Initiatives

WB Manufacturing, a manufacturer of custom work surfaces, tables, furniture and casework has adopted a Green operations initiative that values environmentally responsible practices in manufacturing and operations of its facility.

WB Manufacturing incorporated a broad range program affecting everything from materials that go into its products to its standards on the manufacturing floor. "The process to go Green involved reviewing all areas of the business," said Steve Burgess, President.

Energy consumption is a major expense for the organization, but WB Manufacturing found that with a few simple changes from energy efficient lights on the 200,000 square foot plant to motion sensor light switches in the office area resulted in reduced usage by 54% and significantly lower energy bills. WB Manufacturing also voluntarily participates in the peak load lighting conservation program with the local utility company.

Recycling has always been a standard business practice from using recycled paper in the office equipment and recycled corrugated cardboard for packaging to recycling aluminum cans and plastics. WB Manufacturing even recycles the salvage particle board and MDF scraps using a dedicated shredder to create small bedding particles for local farms.

As part of its green manufacturing focus, WB Manufacturing routinely acquires products like particle board and medium density fiberboard (MDF) with no added urea formaldehyde (NAUF) as well as CARB (California Air Resource Board) compliant materials. "We are constantly evaluating our suppliers to ensure that their products are constructed using recycled wood fiber, as well as providing CARB compliant core materials," added Lane Whitted, Purchasing Manager.

CARB established standards for wood products made with urea-formaldehyde resin products being sold or manufactured in the State of California. The stated goals of CARB include attaining and maintaining healthy air quality; protecting the public from exposure to toxic air contaminants; and providing innovative approaches for complying with air pollution rules and regulations. In selecting MDF and particle board for manufacturing, WB Manufacturing selects Environmentally Preferred Products made from 100% recycled or recovered fiber.

WB Manufacturing products can also assist clients with earning Leadership in Energy and Environmental Design (LEED®) points. Project Managers should specify which LEED point categories are targeted to aid in compliance.

Our other "Green" programs include FSC® certified casework, GREENGUARD® Gold certified REplay® repositionable casework, tables, desks and work tops and other important industry programs.

WB Manufacturing continues to focus its operation on complying with manufacturing standards that puts the health and welfare of the planet and our people first. Our focus is to exceed in Green initiatives and standards.

Visit wibenchmfg.com to learn more about our involvement in the following programs:

- GREENGUARD Gold Certified
- Forest Stewardship Council
- Eco-Certified Composite Standard
- California Air Resource Board
- U.S. Green Building Council, LEED Program



Wisconsin Bench Manufacturing

507 E. Grant St.

Thorp, WI 54771

P - 800.242.2303

F - 715.669.5929

wibenchmfg.com

We Can.
DESIGN. BUILD. DELIVER.

